



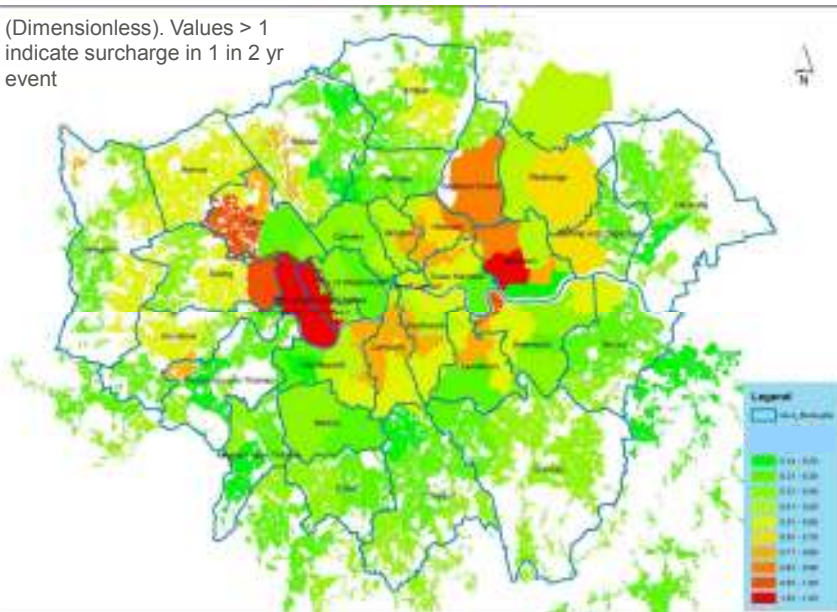
Planning sustainable drainage in London

14 June 2016

Kyle Robins
Wastewater Infrastructure Planning Manager

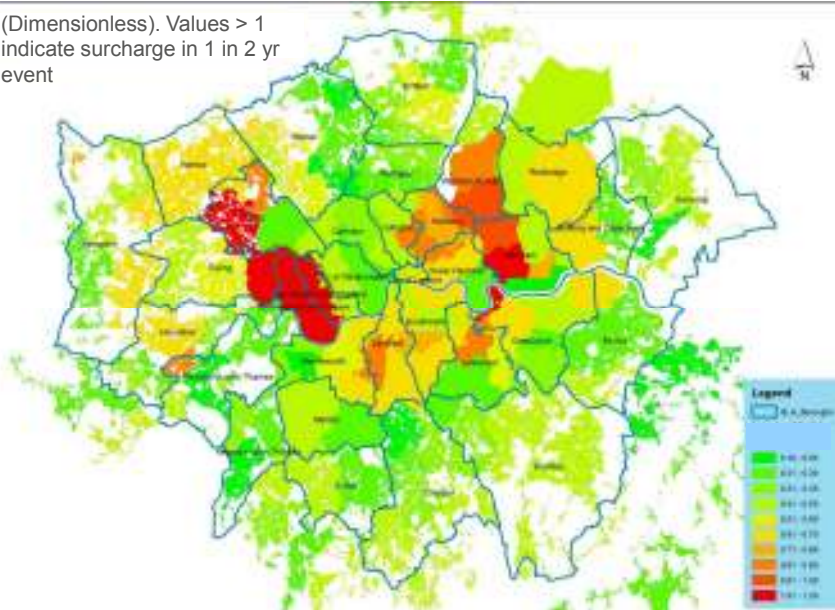
London Model – Storage Utilisation 2014

(Dimensionless). Values > 1 indicate surcharge in 1 in 2 yr event



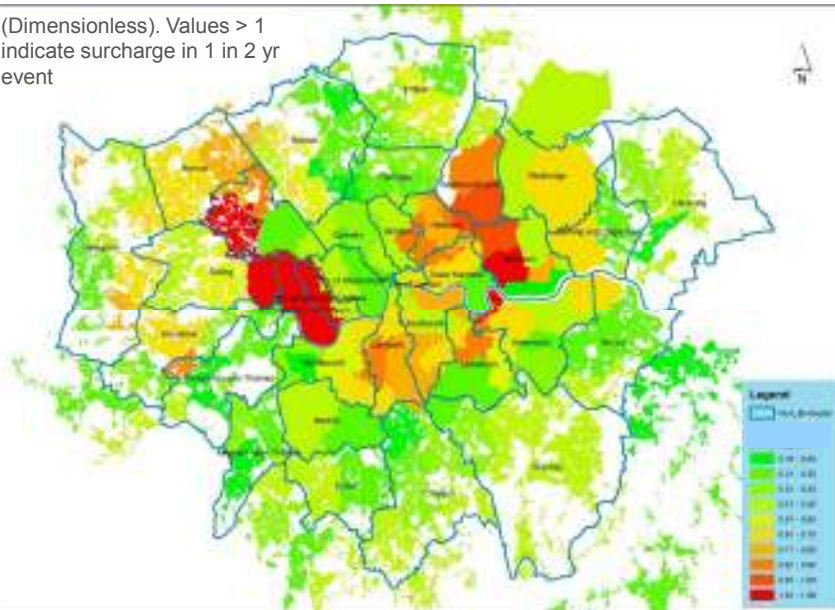
London Model – Storage Utilisation 2020

(Dimensionless). Values > 1 indicate surcharge in 1 in 2 yr event



London Model – Storage Utilisation 2050

(Dimensionless). Values > 1 indicate surcharge in 1 in 2 yr event



Retrofit Pilot - Counters Creek

Counters Creek sewer flooding alleviation scheme

- Over 1,700 basement properties have been flooded with sewage in Kensington and Chelsea (RBKC) and Hammersmith and Fulham (LBHF)

Four main elements:

- Flooding Local Improvement Plans (FLIP devices)
- Counters Creek storm relief sewer
- Improvements to existing sewers
- Sustainable drainage systems (SuDS)



5



Retrofit Pilot - Counters Creek



Melina Road



Arundel Gardens



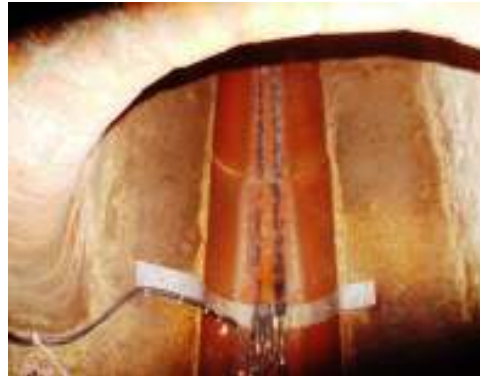
Mendora Road

6



Retrofit Pilot - Counters Creek

- Loggers in place since 2013
- Stringent calibration checks
- Verified hydraulic models produced
- Individual SuDS measures will also be monitored
- Before and after performance will be compared with local control streets



7

Retrofit Pilot - Counters Creek



- Permeable paving along Mendora Road



- Geo-cellular storage at Melina Road



8

'Twenty 4 twenty'



• Herne Hill & Dulwich Flood Alleviation Scheme in partnership with LB Southwark

- Target to invest £20m in sustainable drainage to remove the run-off from 20 hectares of roads, pavements, roofs and other impermeable surfaces
- Will reduce the amount of surface water in combined sewers and risk of sewer flooding
- Work in partnership with Local Authorities, businesses and other not-for-profit organisations



9

9

'Twenty 4 twenty'



Tooting Bec, Heritage Garden



Swindon Town Football Club



Cheesemans Terrace, Fulham



Thank you



11