




Dŵr Cymru
Welsh Water

Experience from Wales – Retrofitting in the urban environment


Jeremy Jones
Dŵr Cymru Welsh Water
10th July 2014




Experience from Wales




- Our Surface Water Management Strategy
- Why are we doing it?
- Where are we doing it?
- How are we doing it?
- Who are our partners?
- What are the benefits?




Surface Water Management?



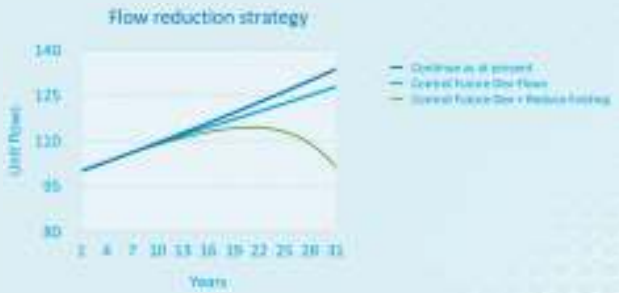
- If we take steps to prevent surface water from entering our assets then the effects are mitigated
- There are additional benefits in the form of:-
 - Reduced carbon use
 - Lower energy costs
 - The influent to our Advanced Digestion plants become stronger improving their efficiency.
- Customer Benefit from societal value
- Dŵr Cymru's approach to Surface Water Management is called RainScape
- Provide infrastructure headroom for communities to plan new homes and commercial enterprises



RainScape
GlawLif



- “...The principle that ...sewerage systems should accommodate future flows is unsustainable in the long-term context of climate change.” - Ofwat Climate Change Policy



Flow reduction strategy

Years	Continue as is present	General Future Use	General Future Use + Reduce Rainfall
1	100	100	100
4	105	105	105
7	110	110	110
10	115	115	115
13	120	120	115
16	125	125	110
19	130	130	105
22	135	135	100
25	140	140	95
28	145	145	90
31	150	150	85

6




Co-operation and Collaboration

“We can’t build our way out of this...” David Balmforth – ICE President

...And we can’t do it on our own!

9

Llanelli Facilitation Group



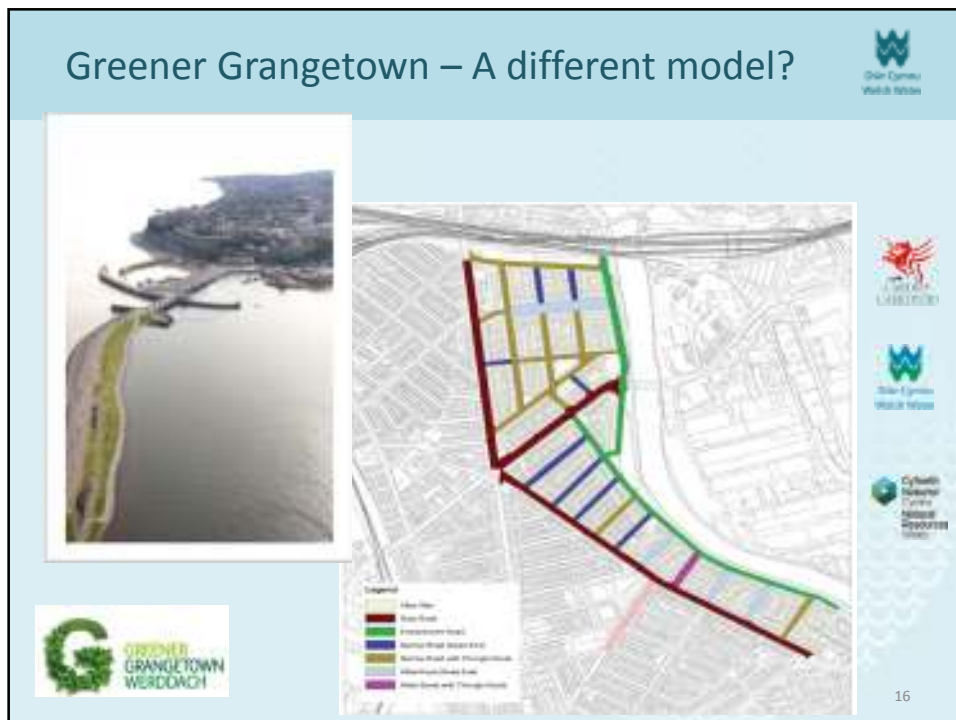
Multi Disciplinary

Multi Agency

10







Grangetown - Pocket parks



Before



After



17

Grangetown – reclaiming the streets for the community



Before

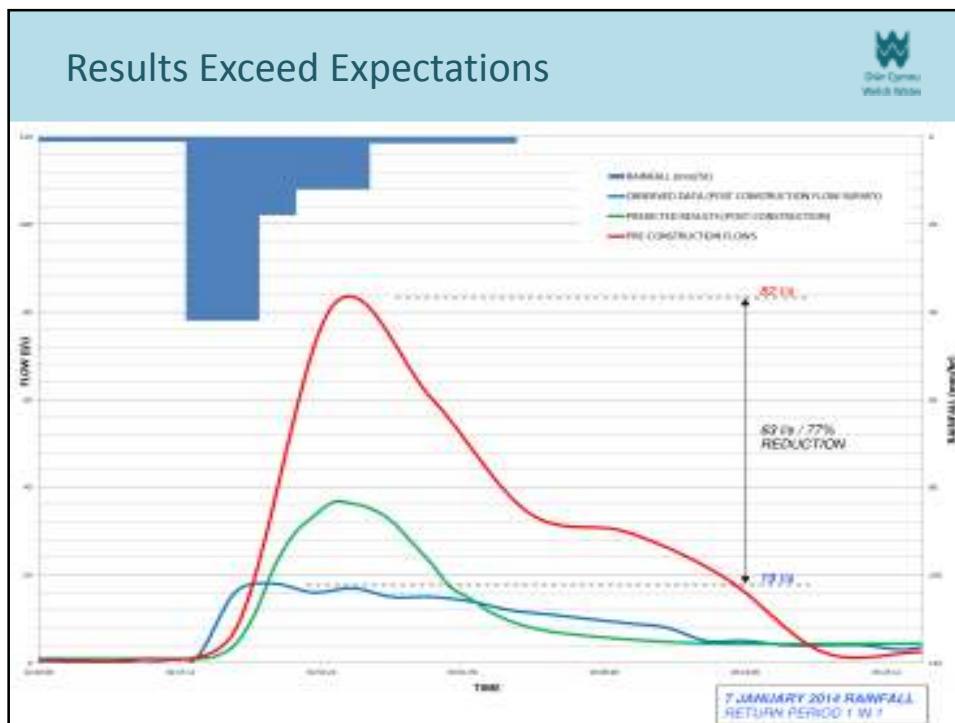


After



18



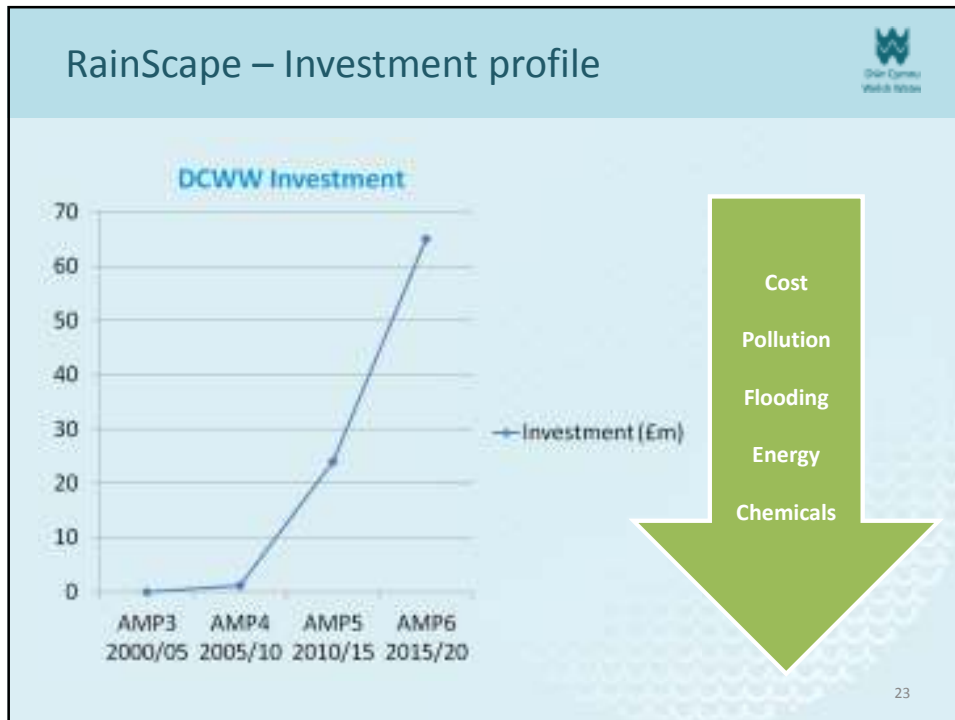


AMP6 - Outcomes and Measures of Success

We will adapt our activities to deal with climate change and will safeguard a sustainable environment

Measure of Success		Units	Performance		
			Now	2020	2040
Adapting to climate change	Reduce the amount of surface water entering our systems	Equivalent no. of Properties	1,000	25,000	125,000
Preventing pollution	Reduce the number of pollution incidents as regulated by NRW	No.	200	160	100

22



- ### Summary
- Climate Change makes a big impact to our Waste water assets
 - Our Rainscape Strategy is an example of how we are adapting our operations to mitigate that impact
 - SuDS are an important part of that Strategy
 - We derive additional “non-tangible” customer benefits
 - Cooperation and Collaboration with all stakeholders is of paramount importance
 - Rainscape improves the overall resilience of our asset base.

Schedule 3 of F&WM Act (2010)



- *Recent ENDS Publication on further delay of Schedule 3*
- *“The announcement talks of implementing SuDS in a way that does not affect development, and we are wary that means there will be a move to dilute the regulations. If you think SuDS affects development, you should try flooding.”*

Thank you
Diolch yn fawr

Visit RainScape at www.dwrcymru.com

Jeremy.Jones@Dwrcymru.com

