

Using SuDS to redefine public spaces in Enfield

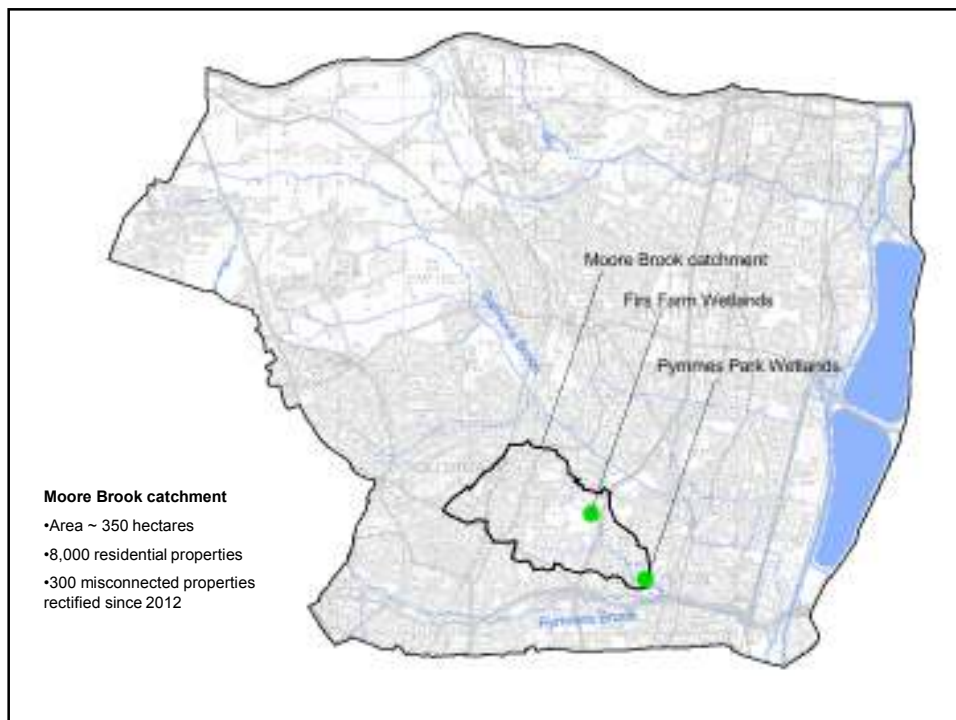
Winning hearts and minds

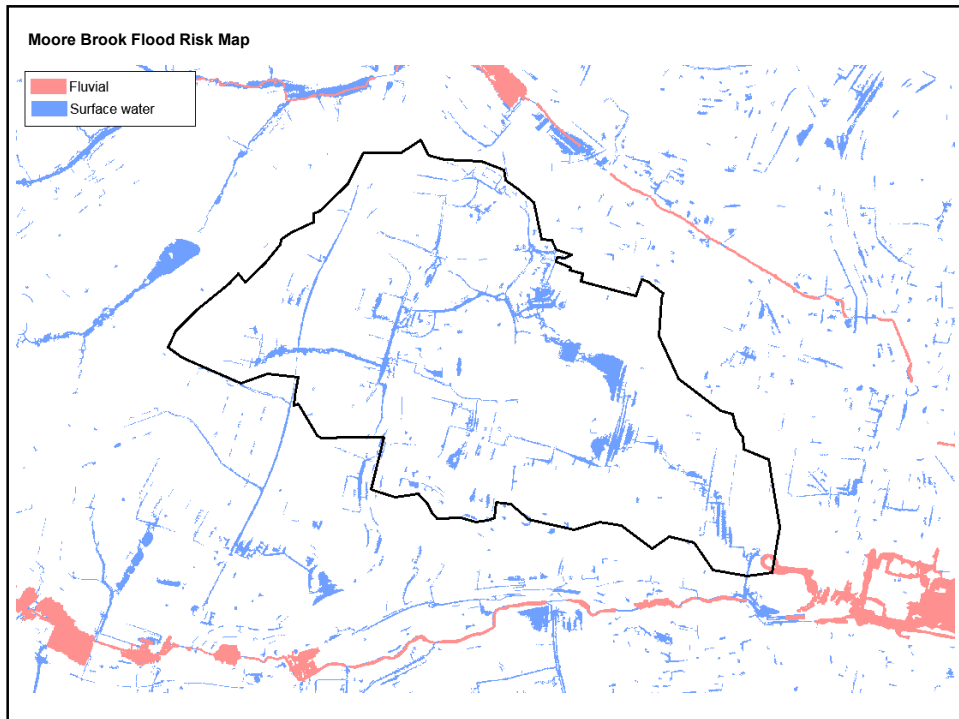
Thursday 1st October 2015

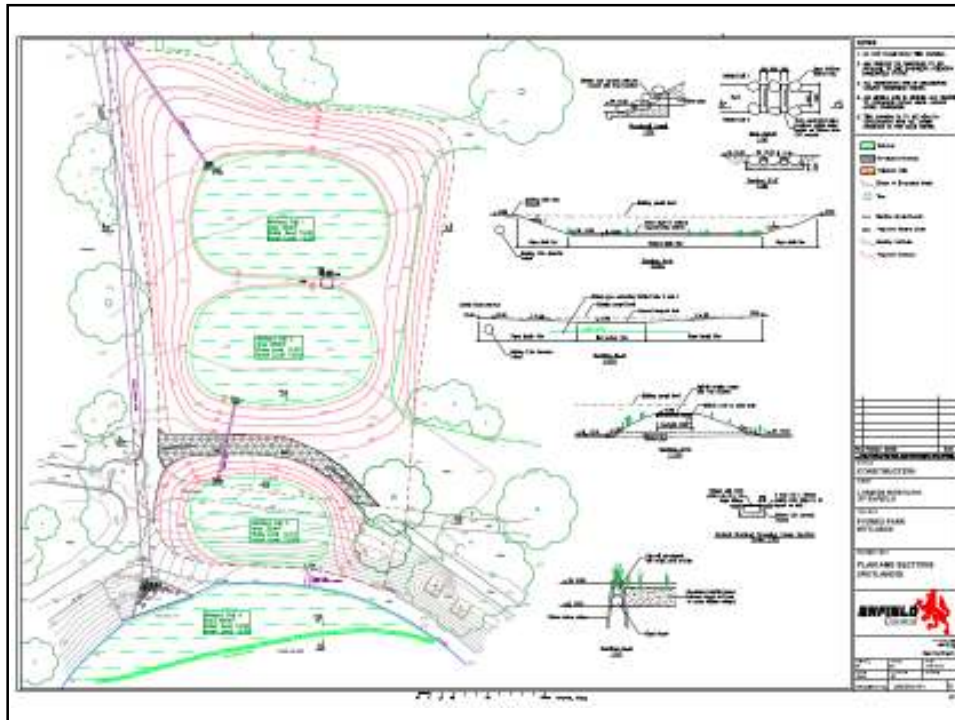


Themes

- Our aims in Enfield
- Normalising SuDS
- Designing for public safety
- Allowing for maintenance
- SuDS perception
- Project case studies ~ technicalities and public engagement







Pymmes Park Wetlands

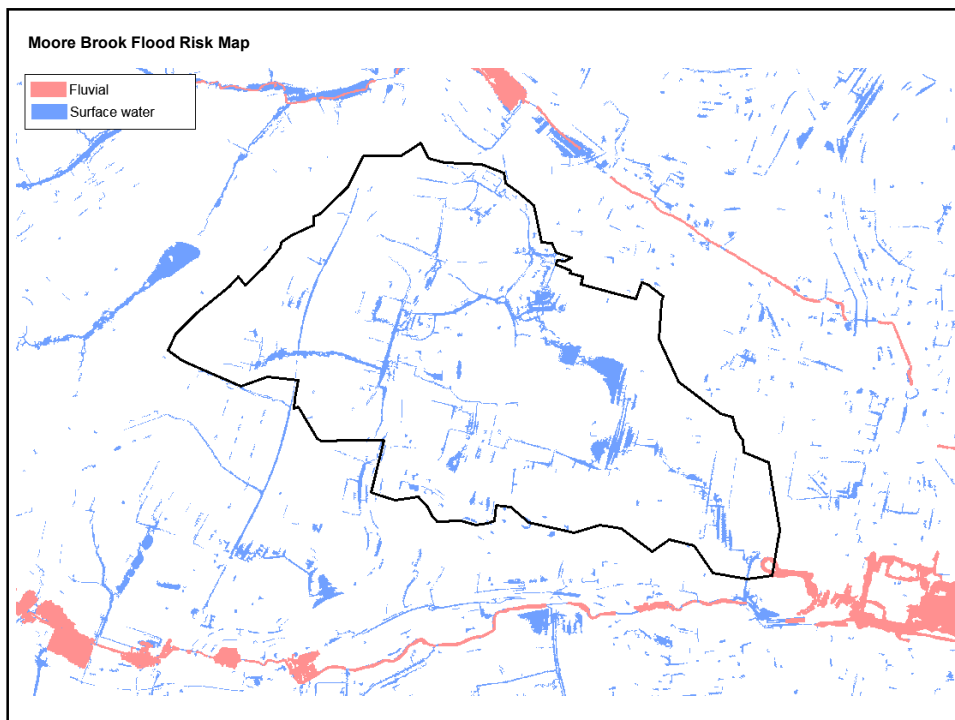
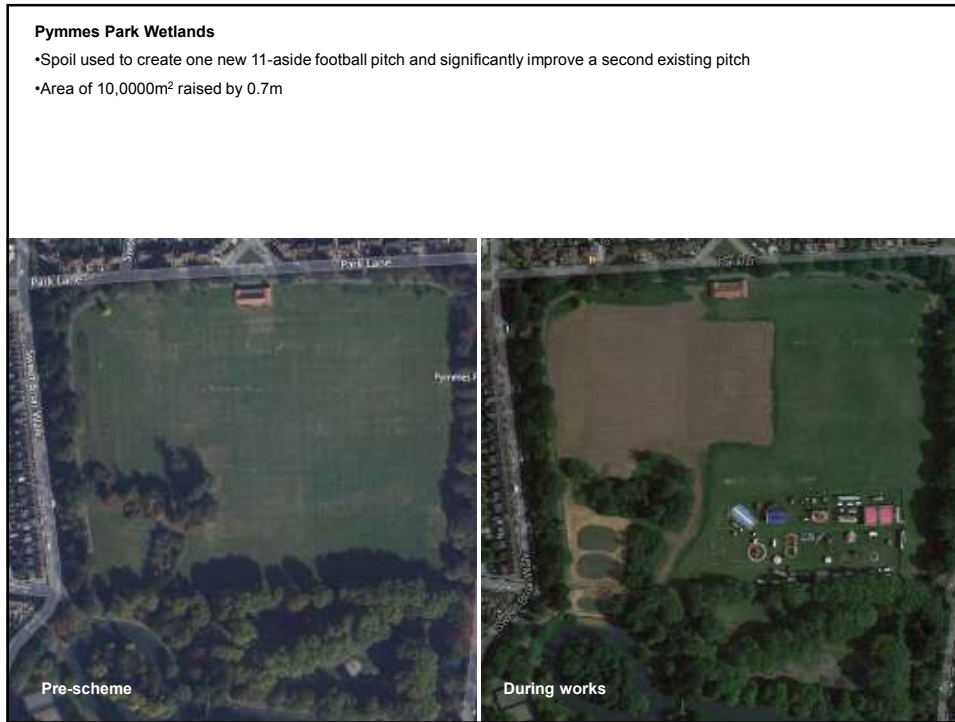
- Total area ~ 5,000m²
- Wetland area ~ 2,000m²
- Volunteer planting in May 2015 organised by Thames21
- 600m² of pre-planted coir mats installed in 2 days
- Trees and shrubs to be planted in Autumn 2015



May 2015



August 2015





Firs Farm Playing Fields 21 hectares, 12 football pitches and 1 rugby pitch



Firs Farm Wetlands 30,000m³ flood storage, 2.4ha habitat enhancements including 4,000m² wetlands, 600m long cycleway



Firs Farm Wetlands – Community Engagement

- A culverted watercourse running through the site
- Development prevented due to flood risk
- An area which required rejuvenation
- A friends group in its infancy

Since the development of the scheme ~

- A friends group which has become engaged and receptive to ideas
- Financial streams from Enfield, Thames Water, Environment Agency and the GLA
- Thames 21 assisting in community engagement and water quality testing
- Series of volunteer planting days



Do you want to Adopt a Tree In Firs Farm?

New trees have been planted along the watercourse and are in need of some TLC from local groups, schools or families. Would you like to help raise a tree in Firs Farm?

This is open to local groups, schools and residents and will give you an opportunity to contribute to maintaining and improving Firs Farm.

The trees are limited in numbers and are either already planted or to be planted in pre-designated areas as part of the Firs Farm wetlands project.

Trees will need to be watered regularly for two years by the adopter. To apply for a tree(s), simply fill out the attached request form and mail / email to the address provided.



- Each tree, has been especially chosen for its contribution to wildlife and the wetlands project.
- Trees require watering, twice a week for six weeks and then at least once a week for the next two years.
- Adequate supervision must be provided to participants who are under 16 years of age.
- The use of power tools and motorised equipment is prohibited.

If you would like to take part in this project and take care of a tree in Firs Farm Wetlands complete and return the form below and return it today to:- Adopt A Tree 2015: Friends of Firs Farm C/o 253 Firs Lane N21 2PH

You will be provided with information about your tree once your application has been accepted.

*Planted June 2015
Looked after by
"A local resident"*

Trees already planted need your help now so please get in touch if you would like to Adopt one of Firs Farm Wetlands Trees.

Shrubs and marginal plant areas are also available for adoption.



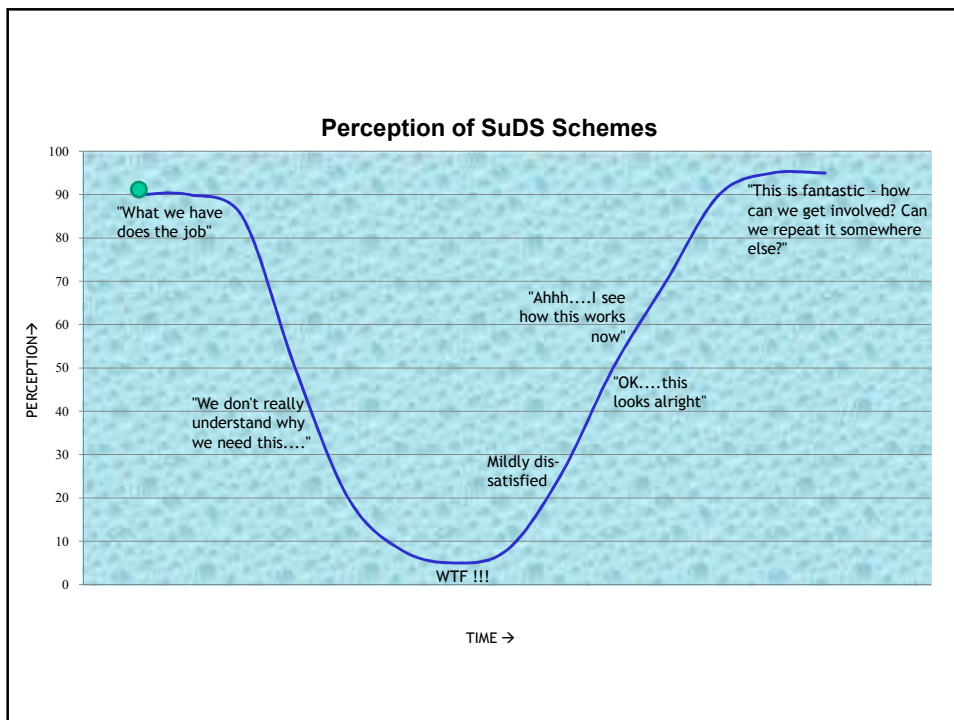
LOVE YOUR GREEN SPACE?

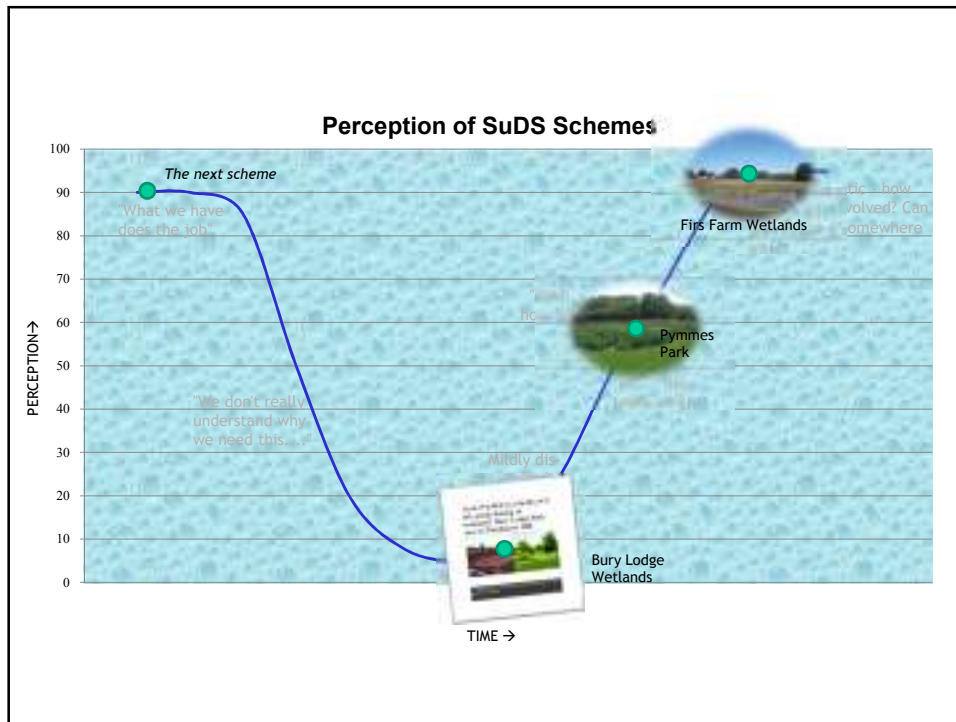












Using SuDS to redefine public spaces in Enfield

Winning hearts and minds

Thursday 1st October 2015



ian.russell@enfield.gov.uk
graham.campbell@enfield.gov.uk
London Borough of Enfield