

susdrain
June 2016

Working with flood authorities to deliver effective SuDS solutions

A case study of managing surface water in Fellgate

Chris McLarnon
Project Technical Lead

 South Tyneside Council  NORTHUMBRIAN WATER *living water*  ESH GROUP  MWH



An integrated approach to surface water management delivered a sustainable solution

by

- 1. developing a common solution***
- 2. adding value***
- 3. winning community support***

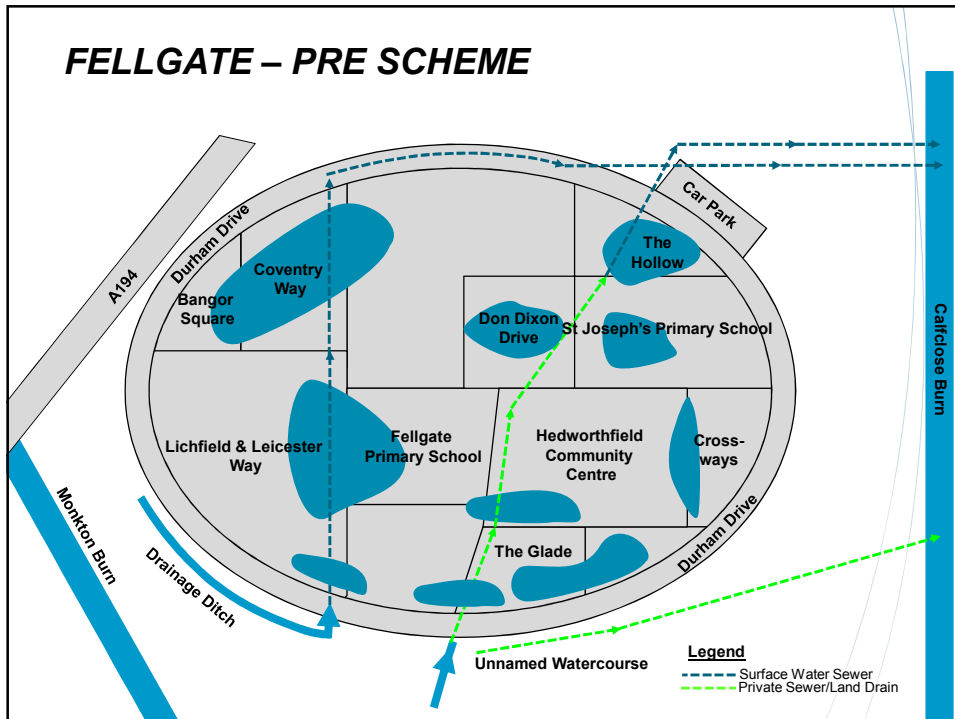
Fellgate estate has a history of flooding with 170 homes flooded in 2012

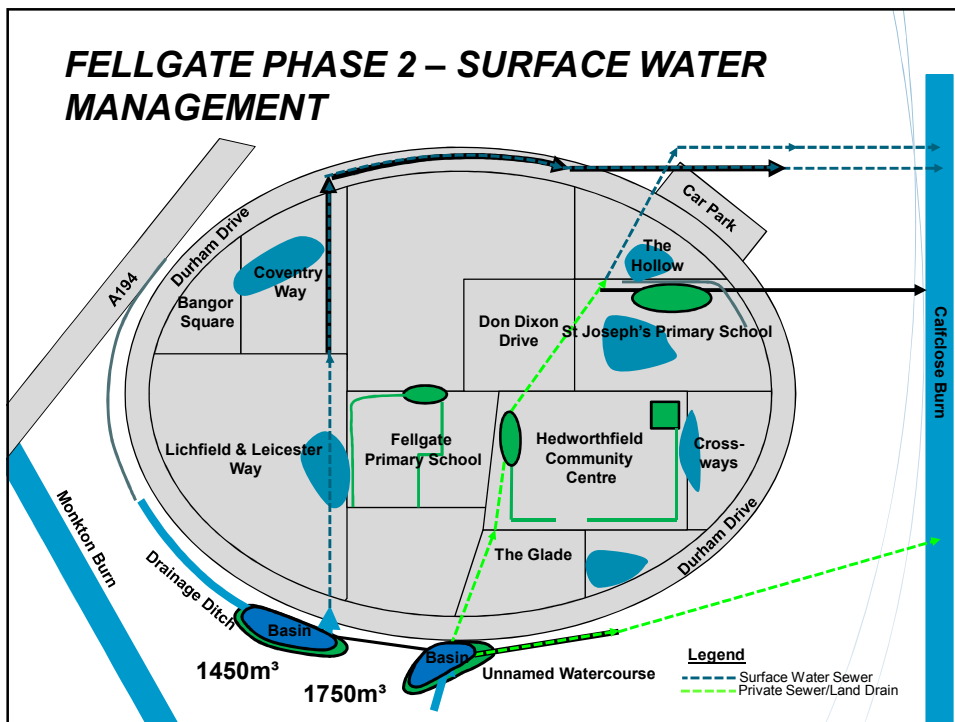
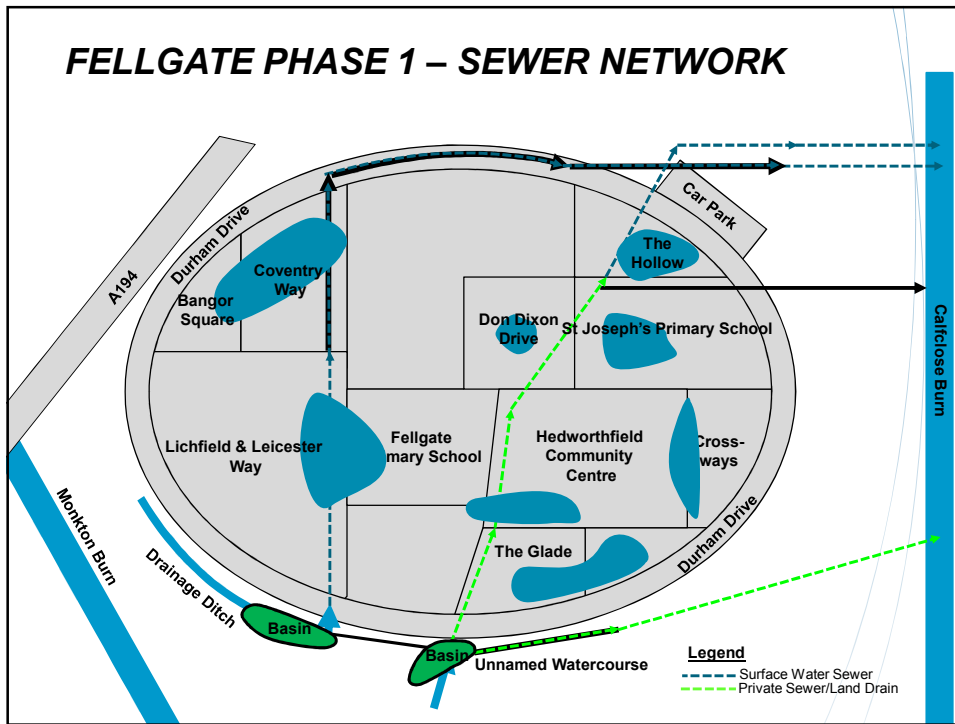


DEFRA Guidance:
“work together and develop a shared understanding of the most suitable solutions to surface water flooding problems”

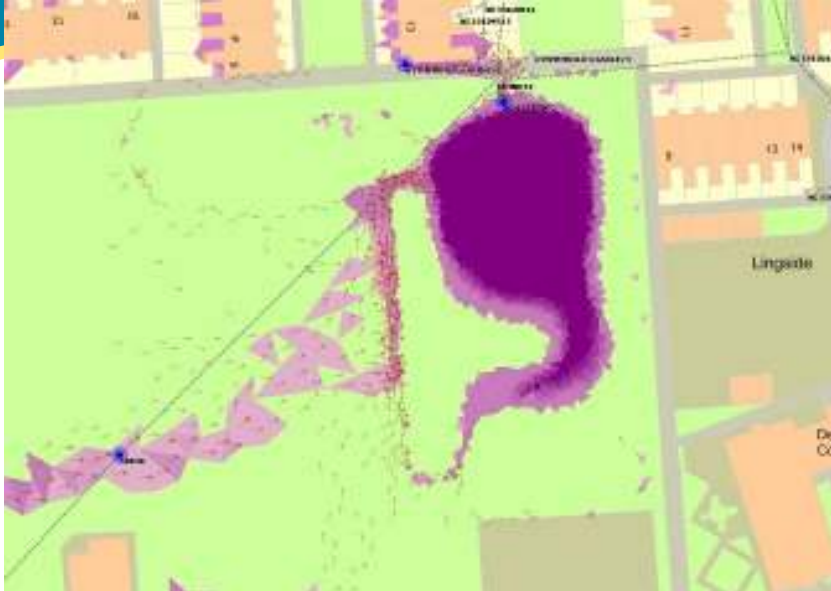


FELLGATE – PRE SCHEME





Measures are designed to intercept overland flow paths and store on the surface



Innovative approach meets the SuDS challenge



Partnering encourages a common understanding of the problem and shared responsibility

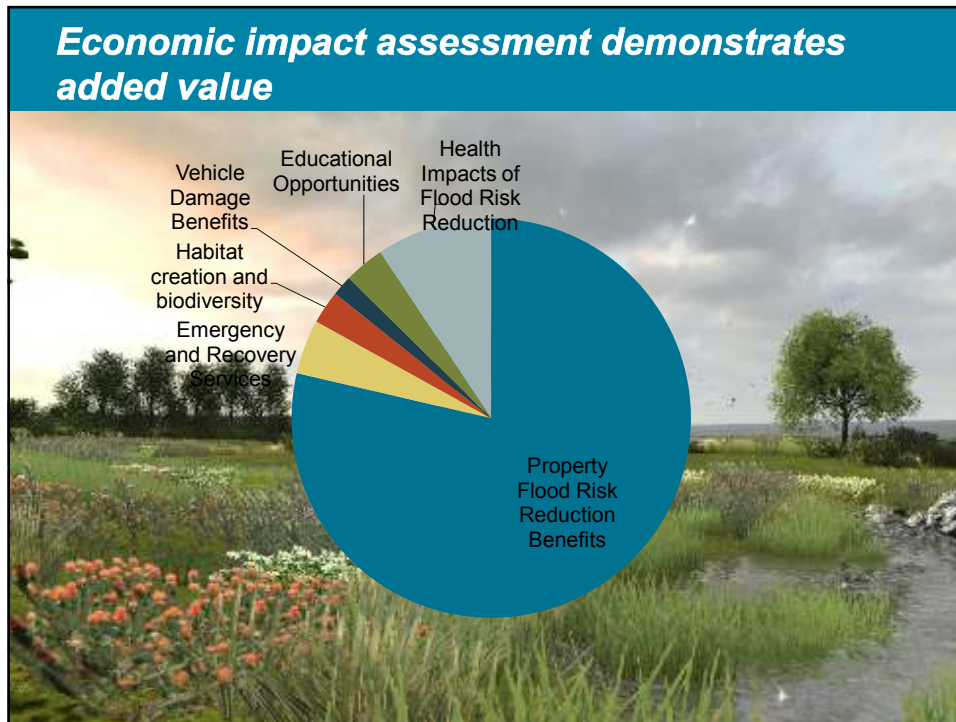
Funding

- Northumbrian Water
- South Tyneside
- GiA
- Local Levy
- Other

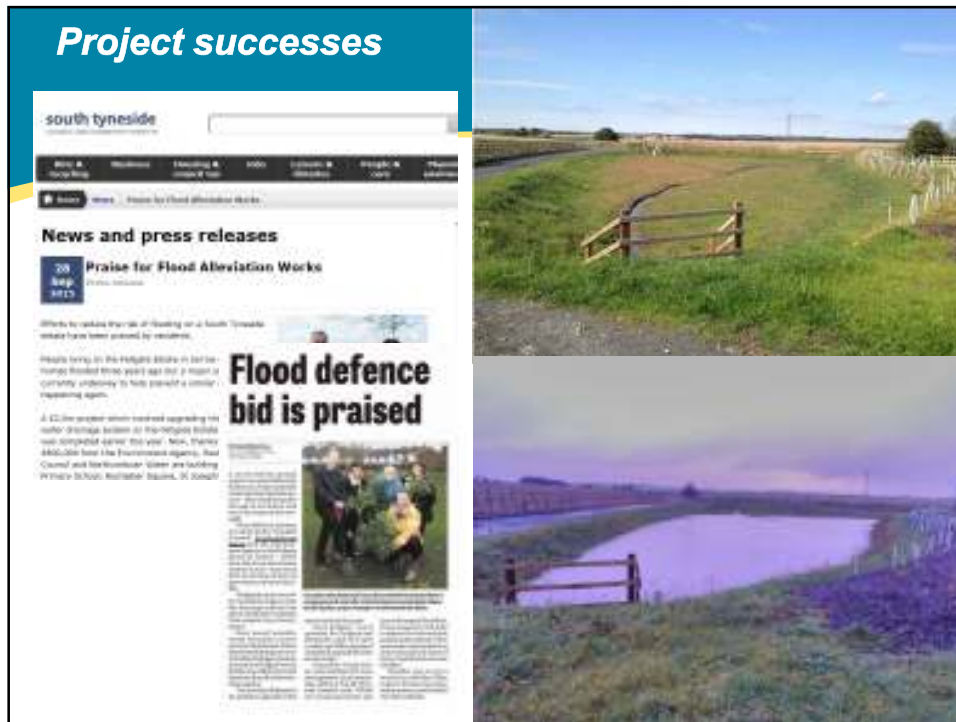
The SuDS approach creates added value opportunities

WWT

MWH



Project successes



News and press releases

Praise for Flood Alleviation Works

Flood defence bid is praised

£2.2m project to improve flood defences in the Houghton area is praised by the Council and local residents.

An integrated approach to surface water management delivered a sustainable solution

- by
- developing a common solution
- adding value
- winning community support

