

Susdrain - SuDS & Placemaking



# Incorporating SuDS into Neighbourhood Improvement Schemes in Central London

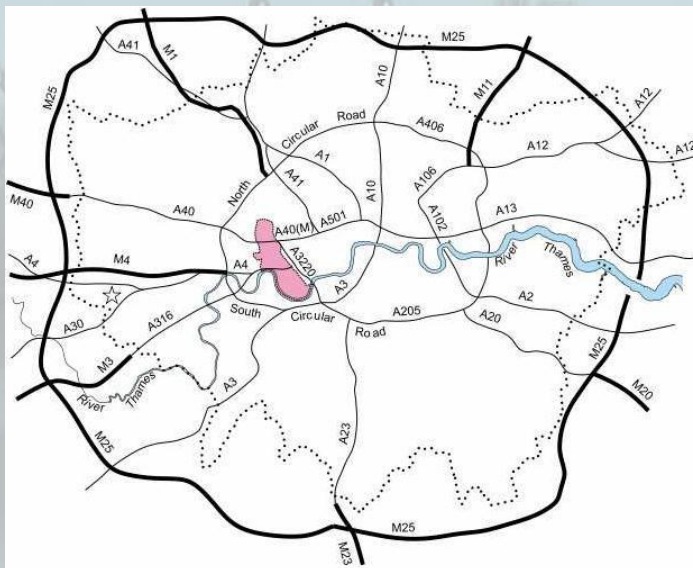
George Warren - Flood Risk Manager  
London Borough of Hammersmith & Fulham

01/10/15

## Contents

1. Background to Hammersmith & Fulham
2. Kenmont 'Rain' Gardens
3. Australia Road SuDS Scheme
4. Challenges of incorporating SuDS into Neighbourhood Improvement Schemes

## Hammersmith & Fulham

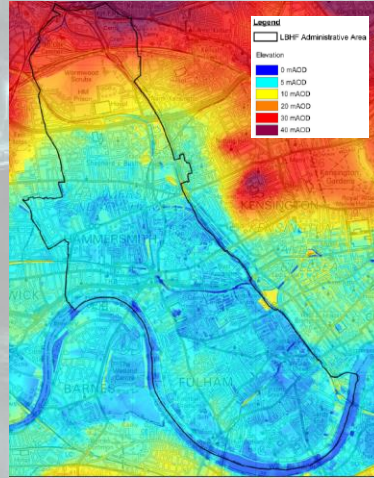
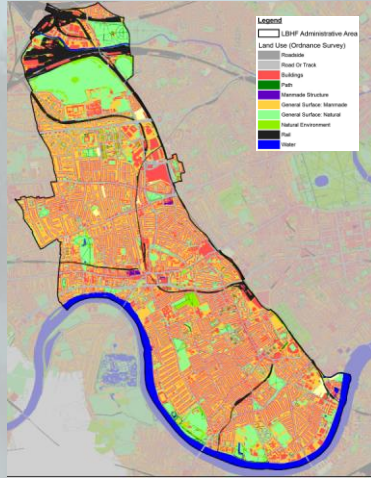


## Hammersmith & Fulham

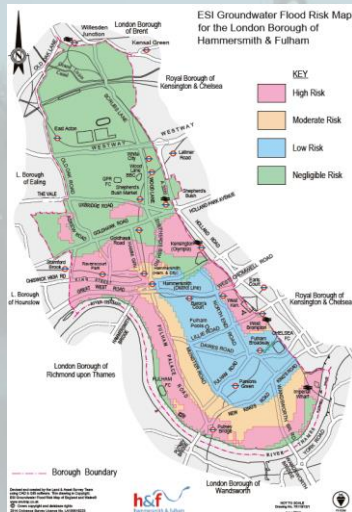
- 183,000 Residents
- 16.4 km<sup>2</sup> (5th smallest in UK)
- 15 Underground Stations
- 3 National League Football Clubs (Chelsea, Fulham & QPR)
- 240km of highway
- 3no. Lost Rivers (Counters Creek, Stamford Brook & Parr’s Ditch)
- 8km of Thames Flood Walls
- Combined Sewer Network (Counters Creek)



# Land Use and Topography



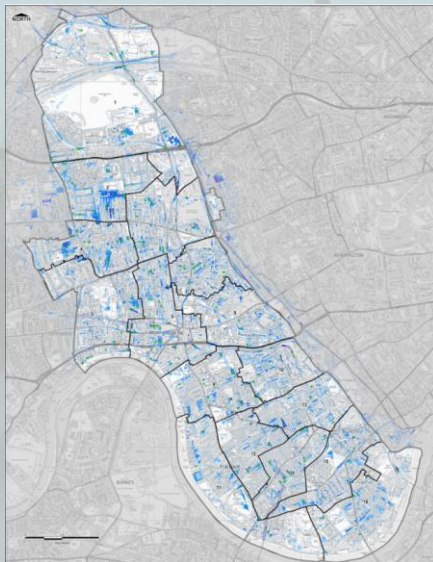
# Ground Conditions



## Fluvial & Tidal Flood Risk



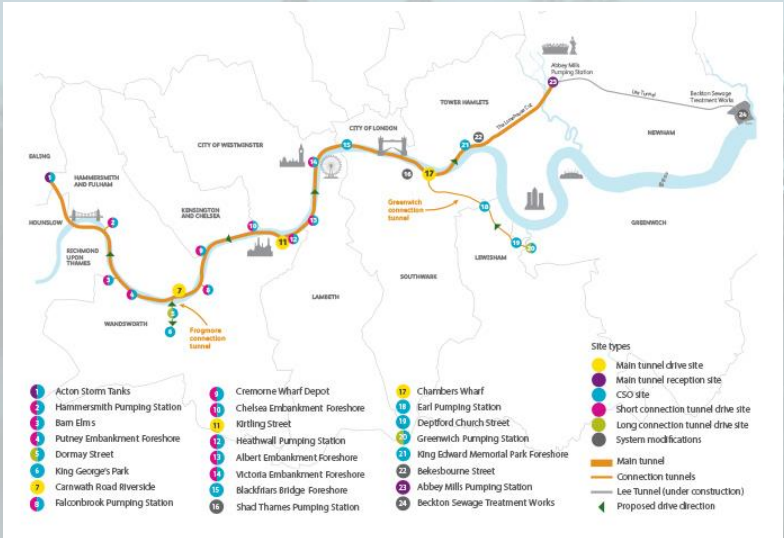
## Surface Water Flooding



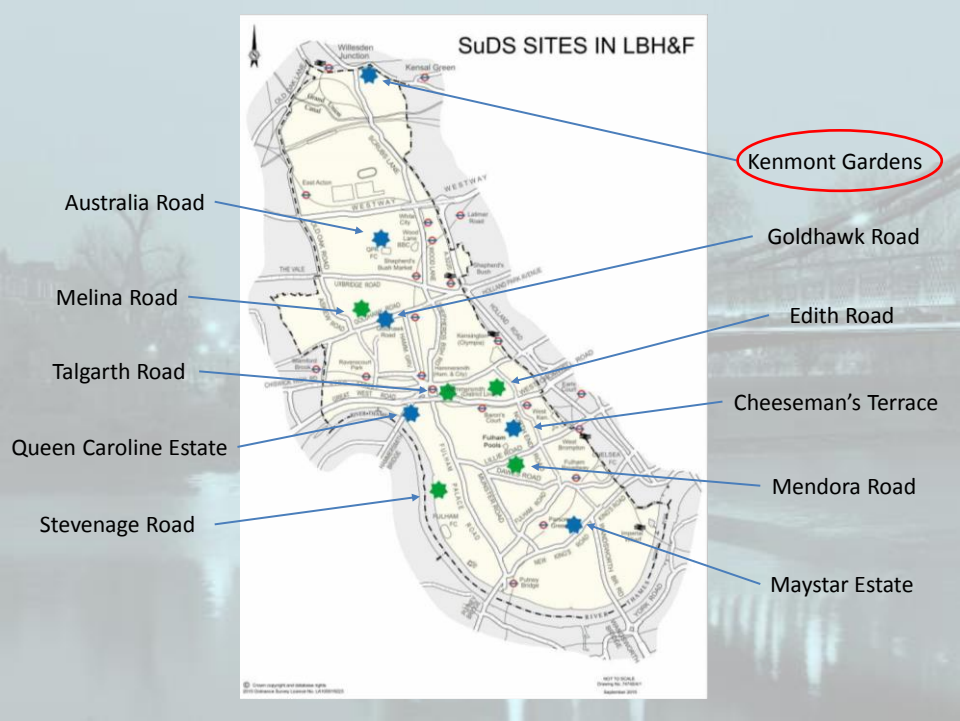
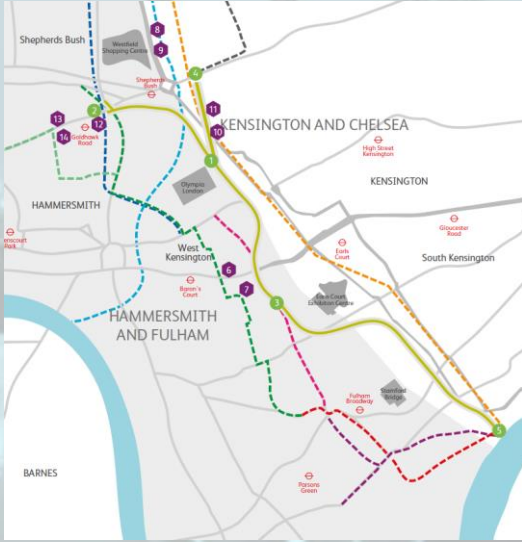
# Unforeseen Flooding



# Thames Tideway Tunnel



# Counters Creek Storm Relief Sewer



## Kenmont Gardens



Anti Social Behaviour

Fly Tipping



## Kenmont Gardens Consultation

- February 2014 - Three concepts were developed and placed out for public consultation
- September 2014 - Preferred option developed and placed out for further consultation
- February–May 2015 - Work undertaken with Residents Association and Kenmont Primary School to create tiles

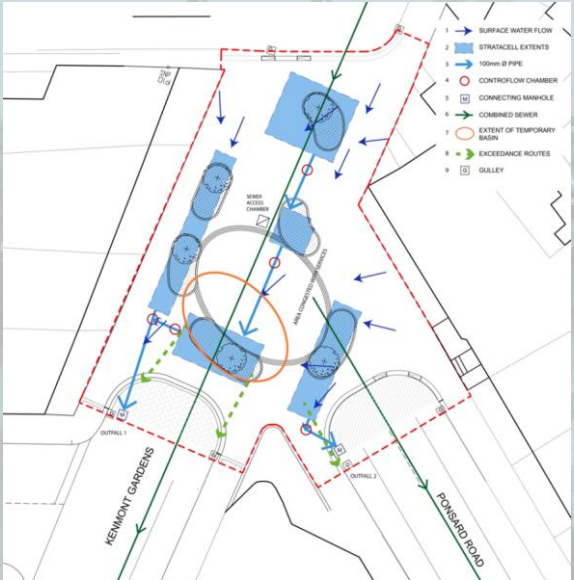
Key Stakeholders: College Park Residents Association, Kenmont Primary School, Thames Water, BT and UK Power Networks

# Concept Plans





# Surface Water Management



# Construction



## Tiles made by Kenmont Primary School



## Community Planting Event 04/06/15



# Community Planting Event 04/06/15



# Kenmont 'Rain' Gardens



# Kenmont Rain Garden

Managing water run-off through tree pits

- Slows water flow to existing drains
- Prevents flooding
- Cleans water
- Protects biodiversity
- Helps tree/plants



## Before & After



## Comments from The Community

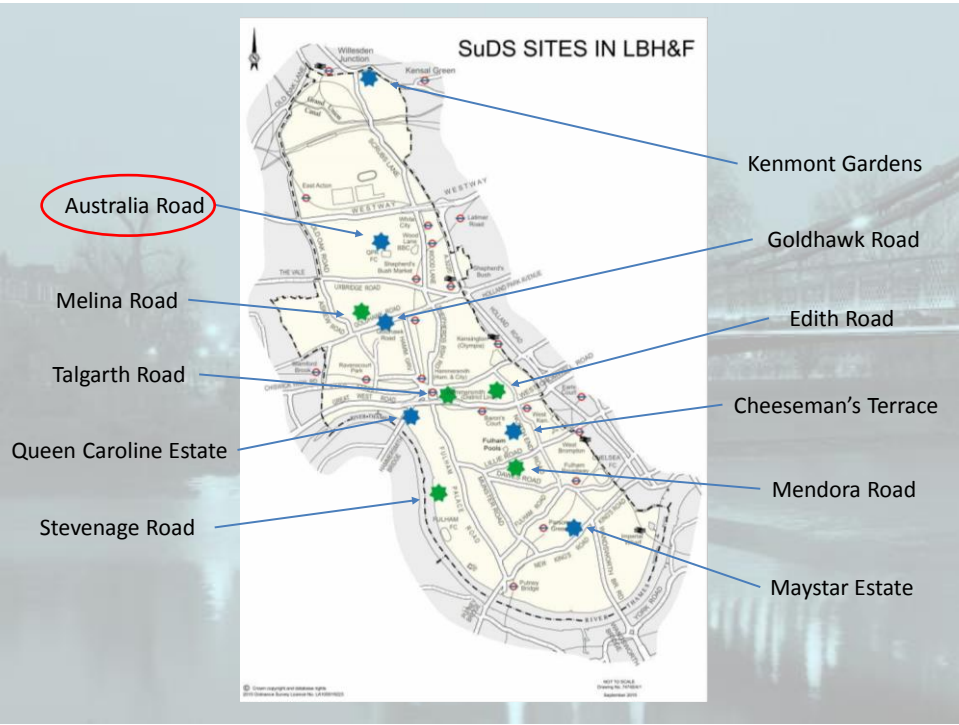
*“This is a very exciting project for the local community”*

KENMONT PRIMARY SCHOOL

*“We were very involved in deciding what trees should be planted and choosing the seating and lighting, and the designers seem to have done a really good job.*

*“For some time now there has been a concrete barrier there to stop traffic which was really quite run down. Given that we have no green space in our area at all, we’re very pleased with this project.”*

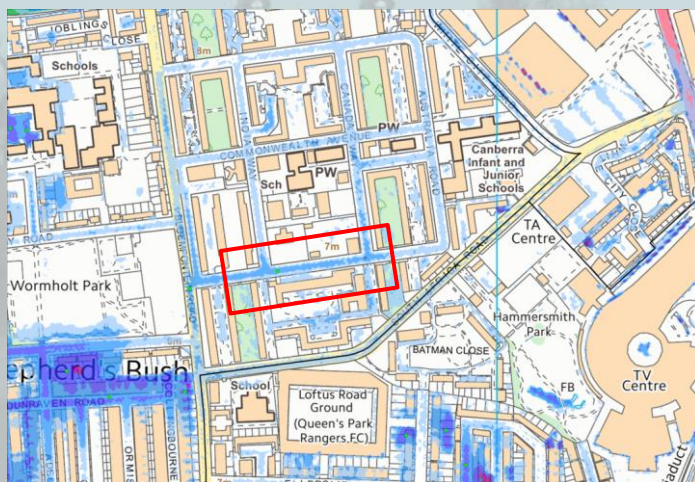
COLLEGE PARK RESIDENTS’ ASSOCIATION



# Australia Road



## Australia Road

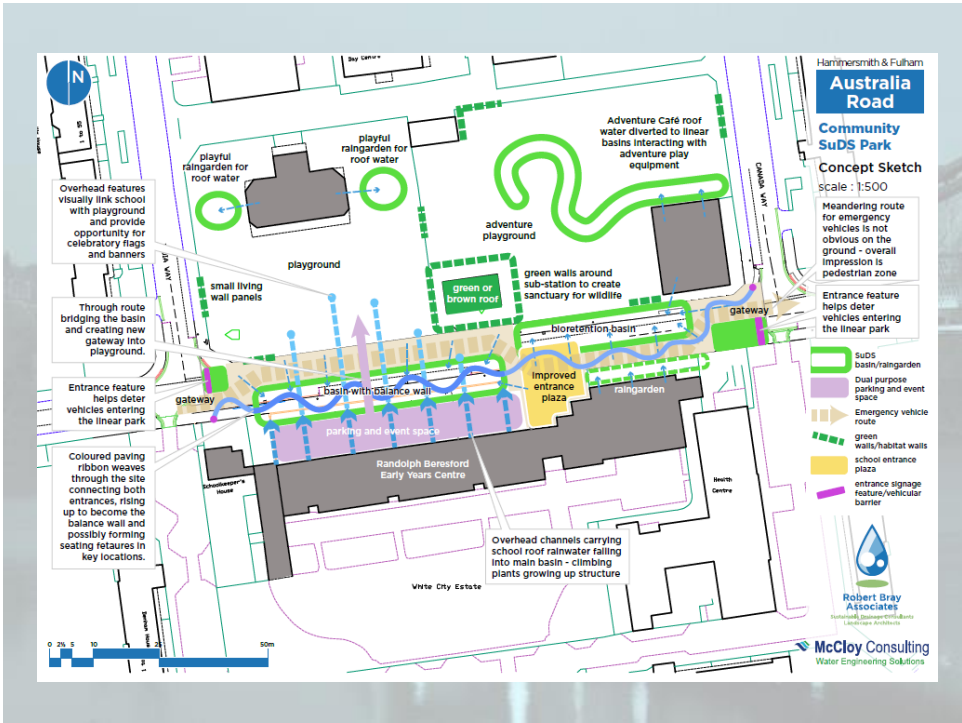


## Australia Road Consultation

- March-June 2013 - Neighbourhood wide consultation
- February 2014 – Public Meeting
- February-March 2014 – Concept Plan Consultation
- April-October 2014 – Detailed Consultation with Key Stakeholders



Key Stakeholders: Randolph Beresford Early Years Centre, White City Residents Association, Thames Water, Metropolitan Police, UK Power Networks, BT, H&F Disability Forum Group





## Construction



## As of 28/09/15 (pre-planting)



### Before & After (28/09/15)



### Before & After (28/09/15)



### Hot off the press...



### Hot off the press...





## Australia Rd Letter Responses

*“I believe it will make a significant difference to the character and appeal of the area....”*

*“It holds definite opportunities for further development and community involvement and cohesion.”*

RANDOLPH BERESFORD EARLY YEARS CENTRE

*“[It] will have a tremendously positive impact on the area and will provide a focal point for residents....”*

*“It is particularly important to note how responsive the scheme is to the needs of children.”*

WHITE CITY RESIDENTS ASSOCIATION

## Challenges of incorporating SuDS into Neighbourhood Improvement Schemes

- Keeping abreast of potential opportunities
- *“I have never witnessed it flood here in my lifetime”*
- Materials not included within standard framework rates (£€\$)
- Planting at ground level
- Maintenance



**h&f**  
hammersmith & fulham

# Thank you

George Warren - Flood Risk Manager  
London Borough of Hammersmith & Fulham  
george.warren@lbhf.gov.uk

Special thanks to:



McCloy Consulting  
Water Engineering Solutions



Robert Bray Associates  
Sustainable Drainage Consultants + Landscape Architects



GreenBlue  
URBAN



PROJECT  
CENTRE