

RUSKIN SQUARE

SUSDRAIN SUDS AWARDS 2018

JOHANNA GIBBONS, J & L GIBBONS

18th JULY 2018



CLOSE COLLABORATION

DESIGN TEAM:

MUF ARCHITECTURE/ART - PUBLIC REALM ARCHITECTS

J & L GIBBONS - LANDSCAPE ARCHITECTS

ARUP - STRUCTURE & CIVILS ENGINEERS

PLANNING OBLIGATIONS

LONDON PLAN

Developers should aim for Greenfield Run off rates – Typically 2 – 8 l/s per hectare

If greenfield runoff rates are not proposed, Developers will be expected to clearly demonstrate how all opportunities to minimise final site runoff, as close to greenfield rate as practical, have been taken.

Most developments have been able to achieve at least 50% attenuation of the site's surface water runoff at peak times. *This is the minimum expectation from development proposals*

FRONT COVER



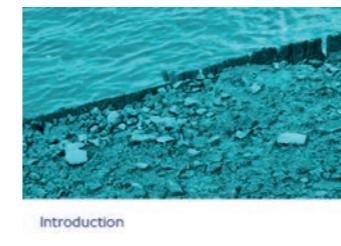
CONTENTS PAGES

Contents

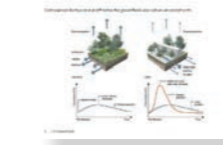
3 Introduction	2.13 Archaeology	125 Implementation
I. Background	2.14 Crime and disorder	6.1 Implementation
II. Who is the guidance for?	2.15 Highways and planning	6.2 SuDS design team
III. Surface water and SuDS	2.16 Inclusive design	6.3 Drainage hierarchy
IV. A SuDS approach		
V. How should I use the guidance?	29 SuDS components	131 Cost benefit
VI. Structure of the guidance	3.1 Which SuDS components are suitable for London?	7.1 Cost benefit
	3.2 Structures	7.2 Methodology
7 Principles of SuDS	3.3 Infiltration systems	7.3 Design life
1.1 Planning for SuDS	3.4 Filter strips	7.4 Cost comparison
1.2 Wider benefits	3.5 Filter drains	7.5 Best value
1.3 The four pillars of SuDS	3.6 Wet swales and dry swales	
1.3.1 Water quantity	3.7 Rills, runnels and channel systems	137 Appendices
1.3.2 Water quality	3.8 Bioretention systems	Further information
1.3.3 Amenity	3.9 Trees	Glossary
1.3.4 Biodiversity	3.10 Permeable paving	
	3.11 Detention basins	
16 The London context	3.12 Attenuation and storage	
2.1 What is unique about London?	3.13 Ponds and wetlands	
2.2 The Thames River Basin	3.14 Management and maintenance	
2.3 London's geological conditions		
2.4 London's chalk aquifer	65 SuDS on London's streets	
2.5 London's soils	4.1 SuDS and the urban realm	
2.6 Streetscapes of London	4.2 Street scenarios	
2.7 Townscape		
2.8 Retrofitting	75 Case studies	
2.9 London's green infrastructure	Case study index	
2.10 Trees		
2.11 Working with London's utilities		
2.12 Contamination		

CHAPTER EXTRACTS

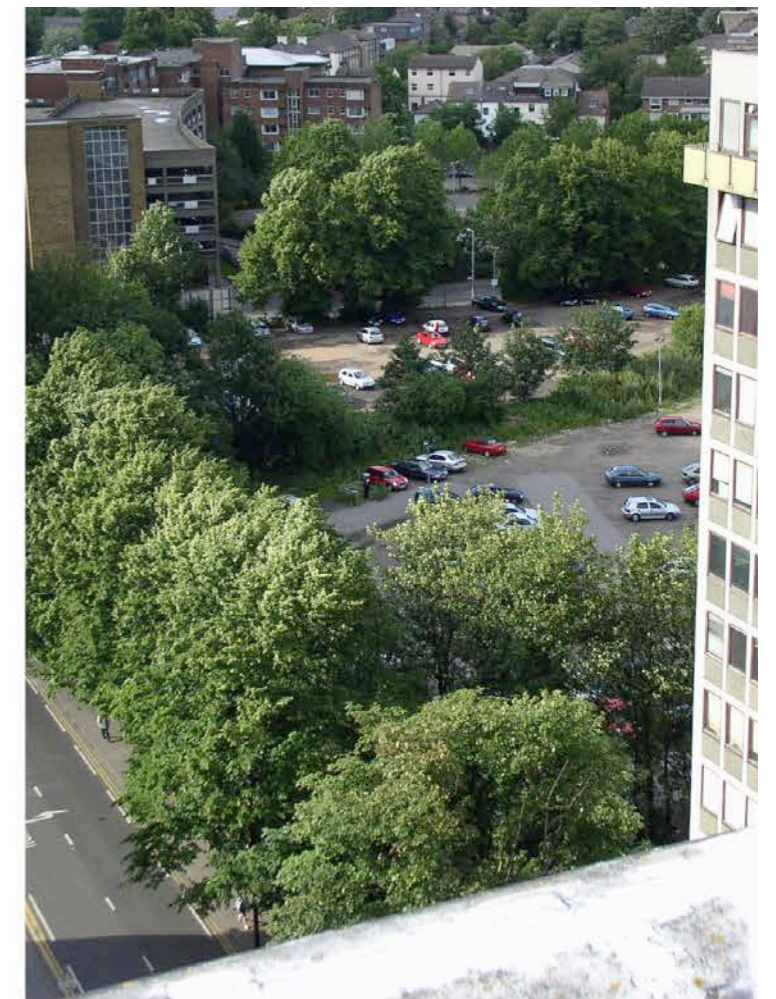
INTRODUCTION



1 PRINCIPLES OF SuDS



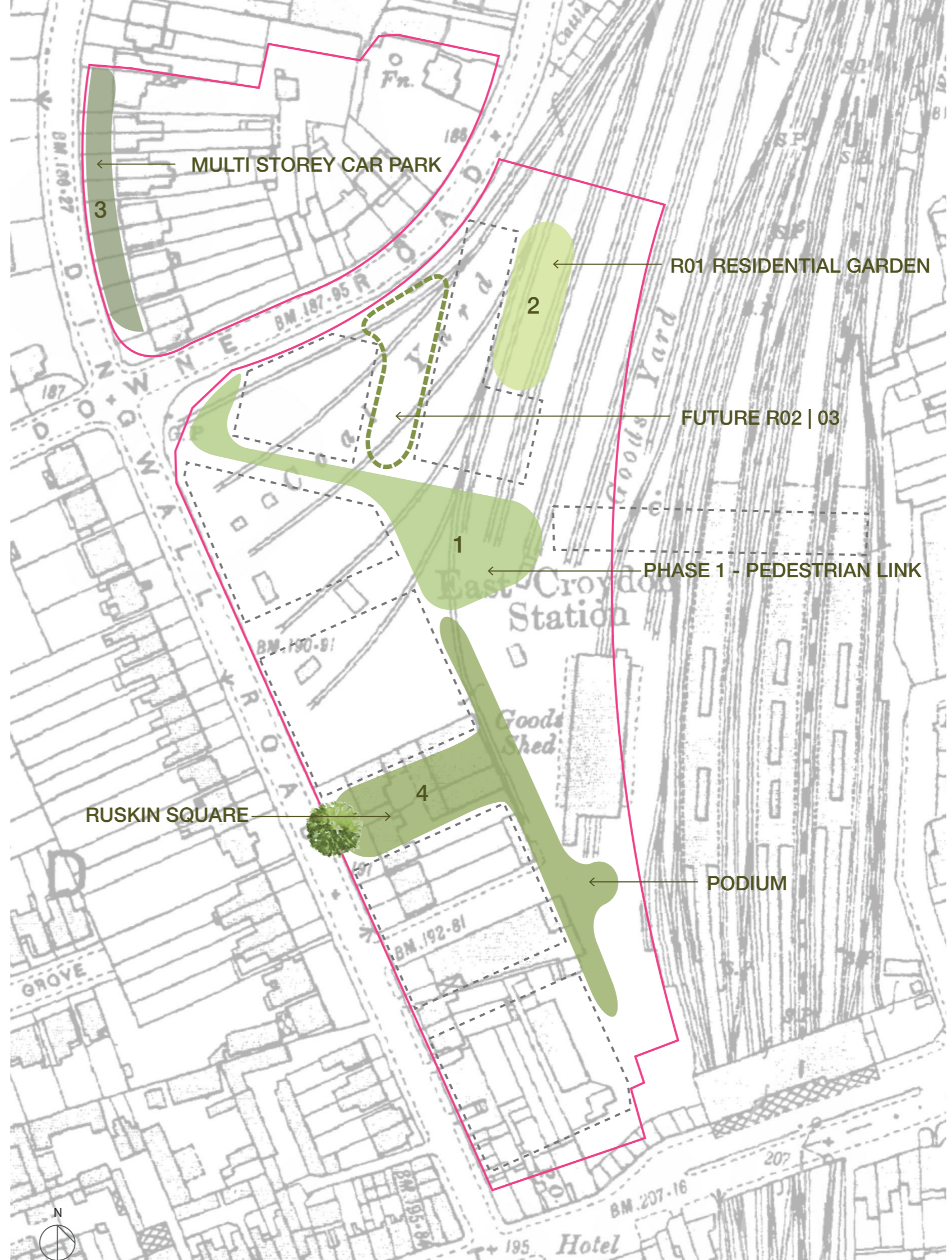
EAST CROYDON STATION DEVELOPMENT SITE BEFORE



PHASED DELIVERY

PUBLIC REALM AHEAD OF DEVELOPMENT

A SITE WITH LAYERS OF HISTORY



DELIVERY PLOTS



MARCH 2014

PHASE 1 | PEDESTRIAN LINK, CAITHNESS WALK



CAITHNESS WALK, 2014



SEPTEMBER 2015

PHASE 2 | RESIDENTIAL R01



APRIL 2016



MAY 2017

PHASE 3 | MULTI-STOREY CAR PARK



NOVEMBER 2015

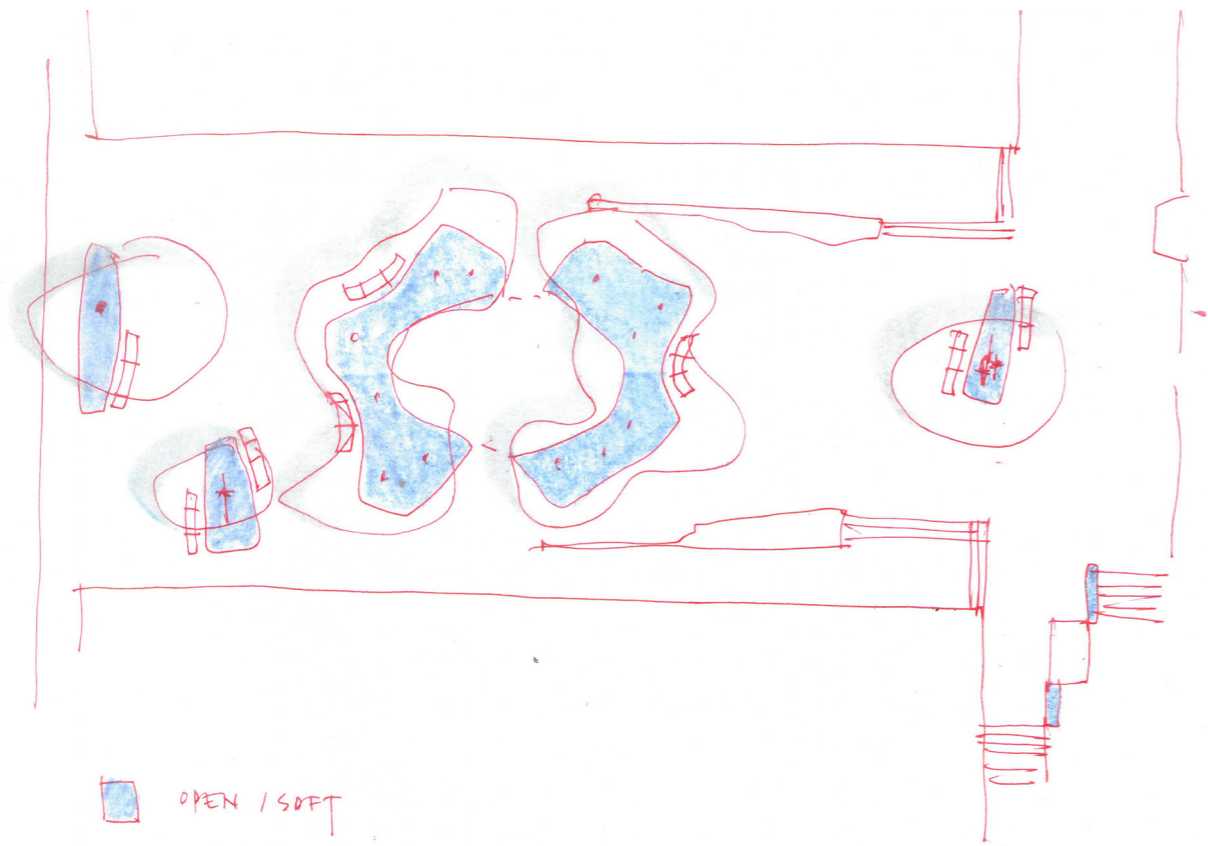


JUNE 2017

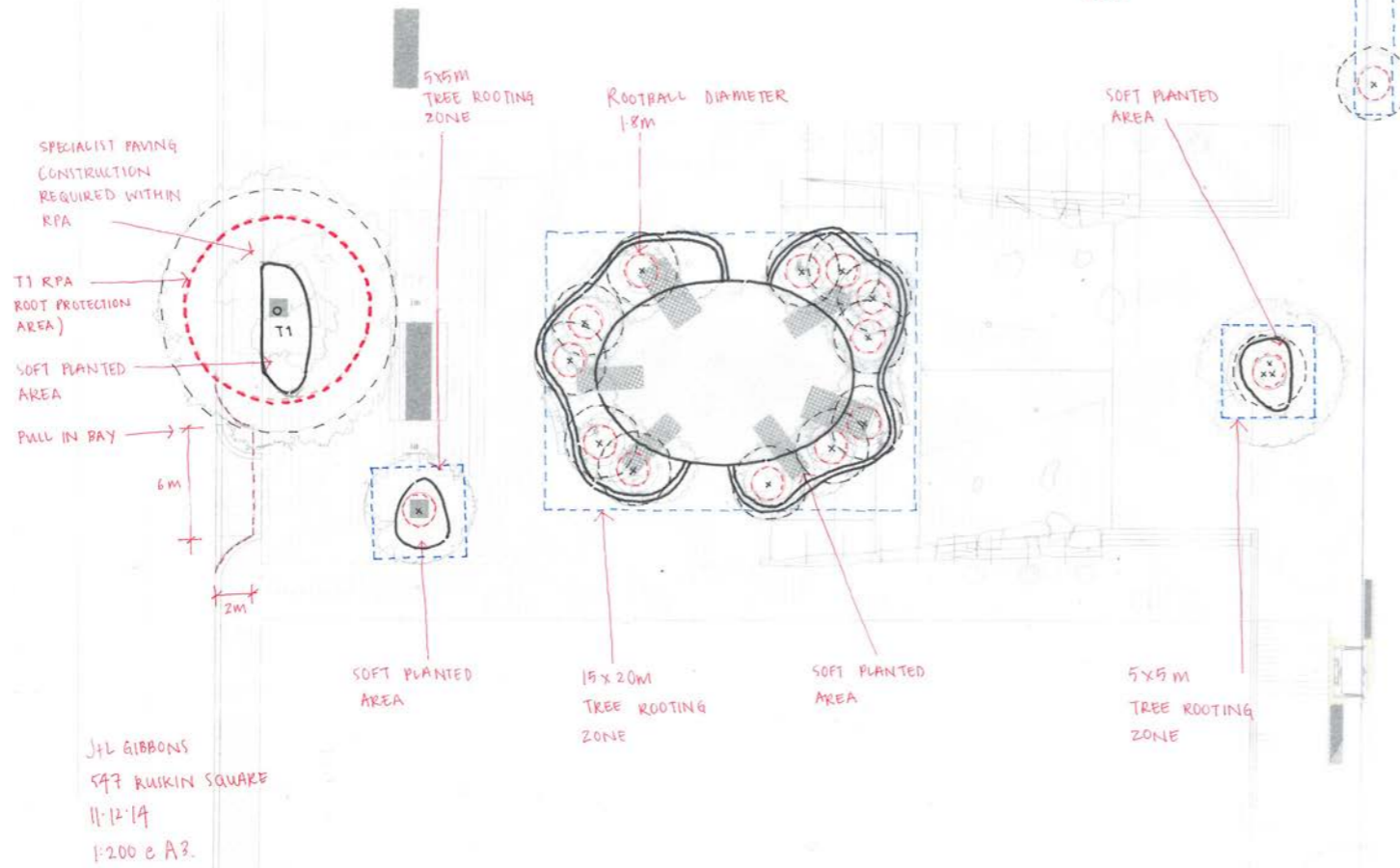
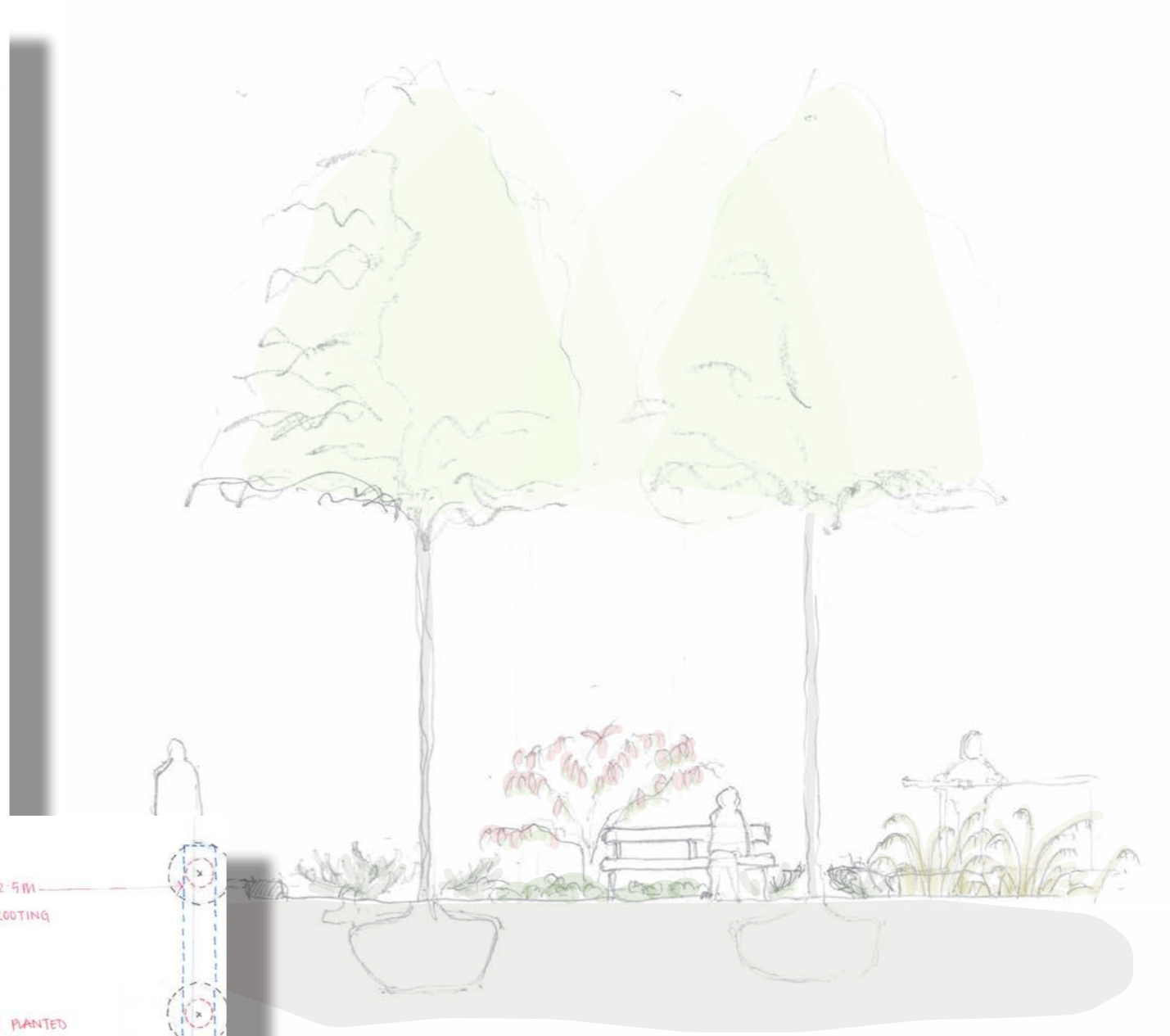
PHASE 4 | RUSKIN SQUARE



JUNE 2016

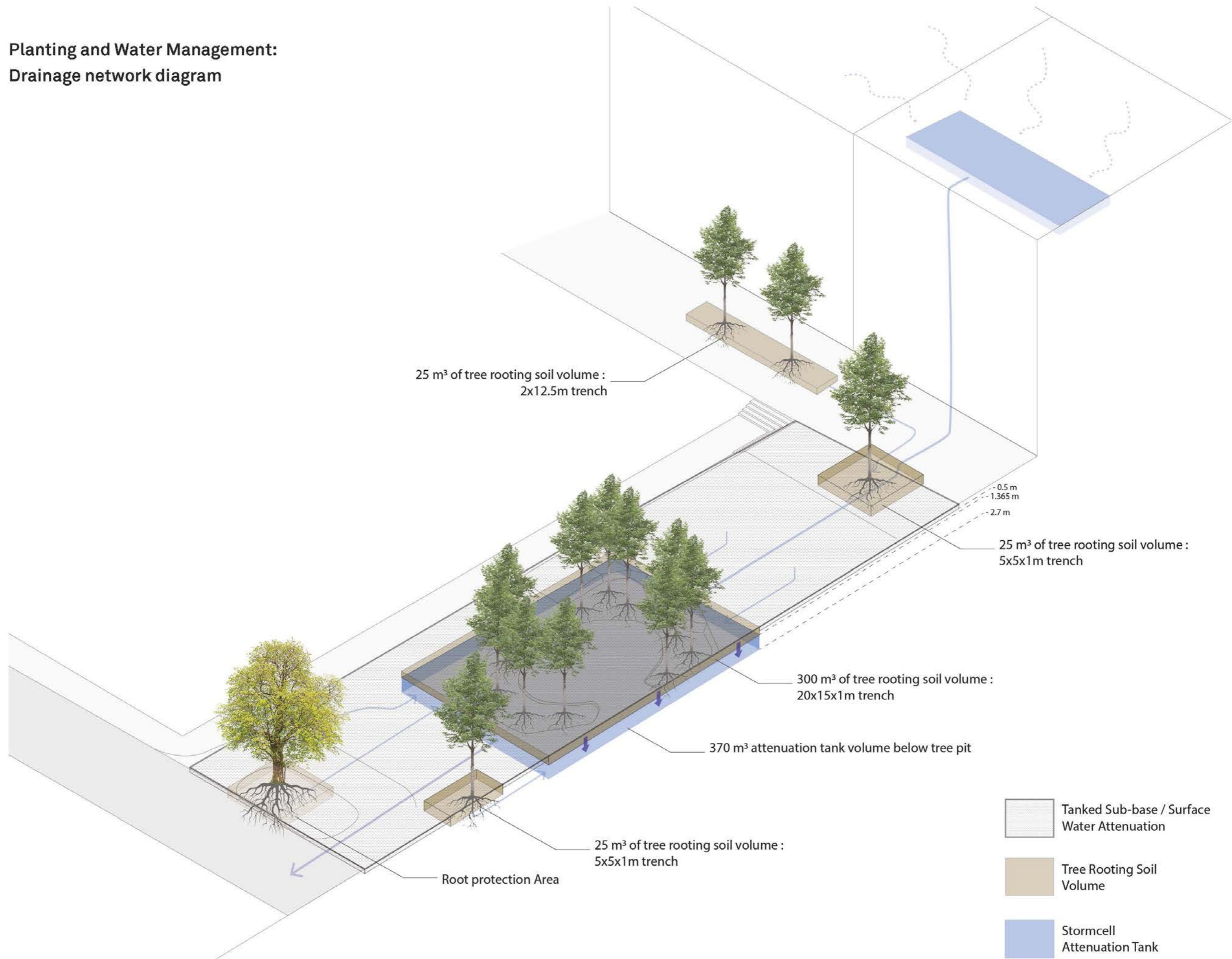


J L GIBBONS
597 RUSKIN SQ
OVERLAY



J L GIBBONS
597 RUSKIN SQUARE
11.12.14
1:200 @ A3

Planting and Water Management: Drainage network diagram



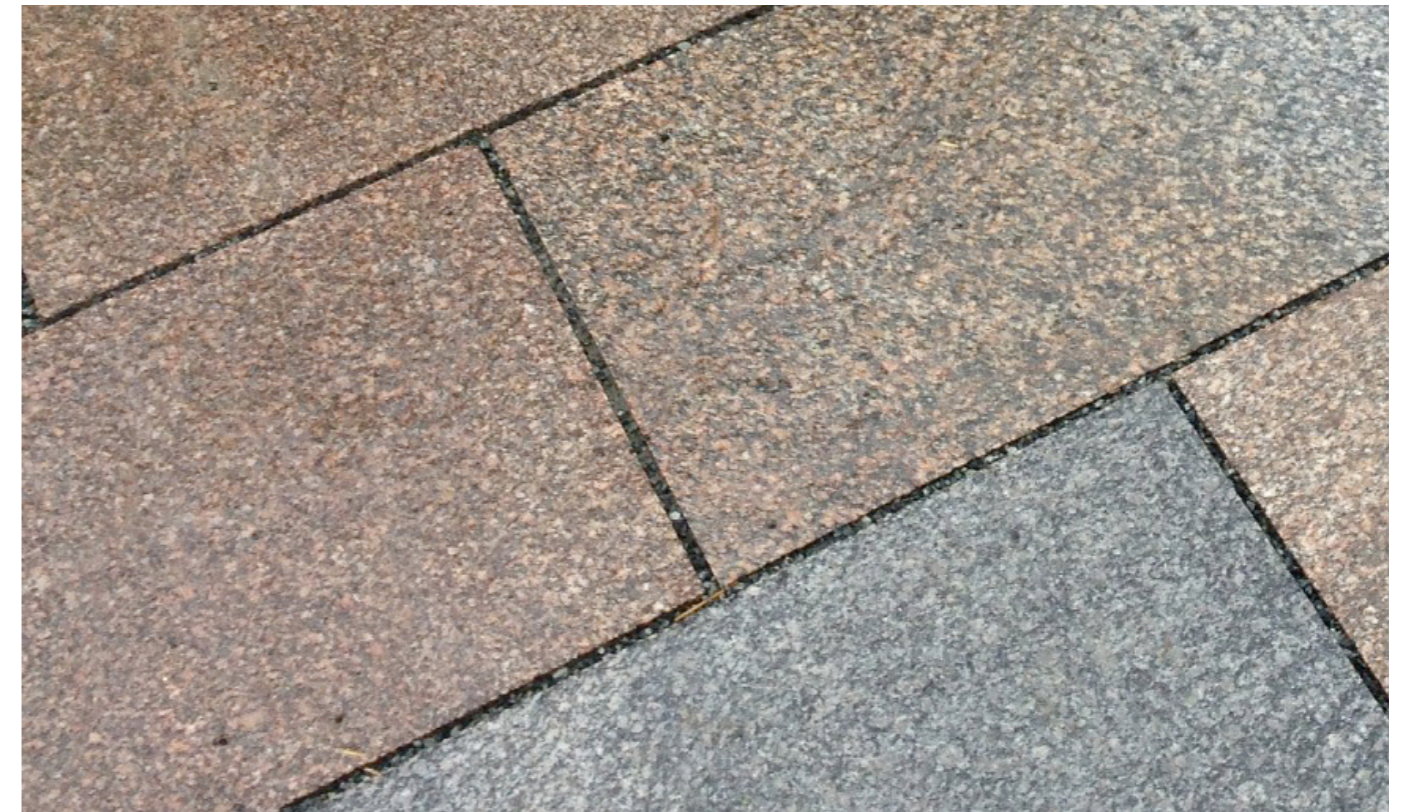


MARCH 2016 | ATTENUATION CRATE INSTALLATION

380m³ ATTENUATION VOLUME



JUNE 2016 | SOIL CELL INSTALLATION



SEPTEMBER 2016 | PERMEABLE GRIT JOINTED PAVING

60m³ ATTENUATION VOLUME.



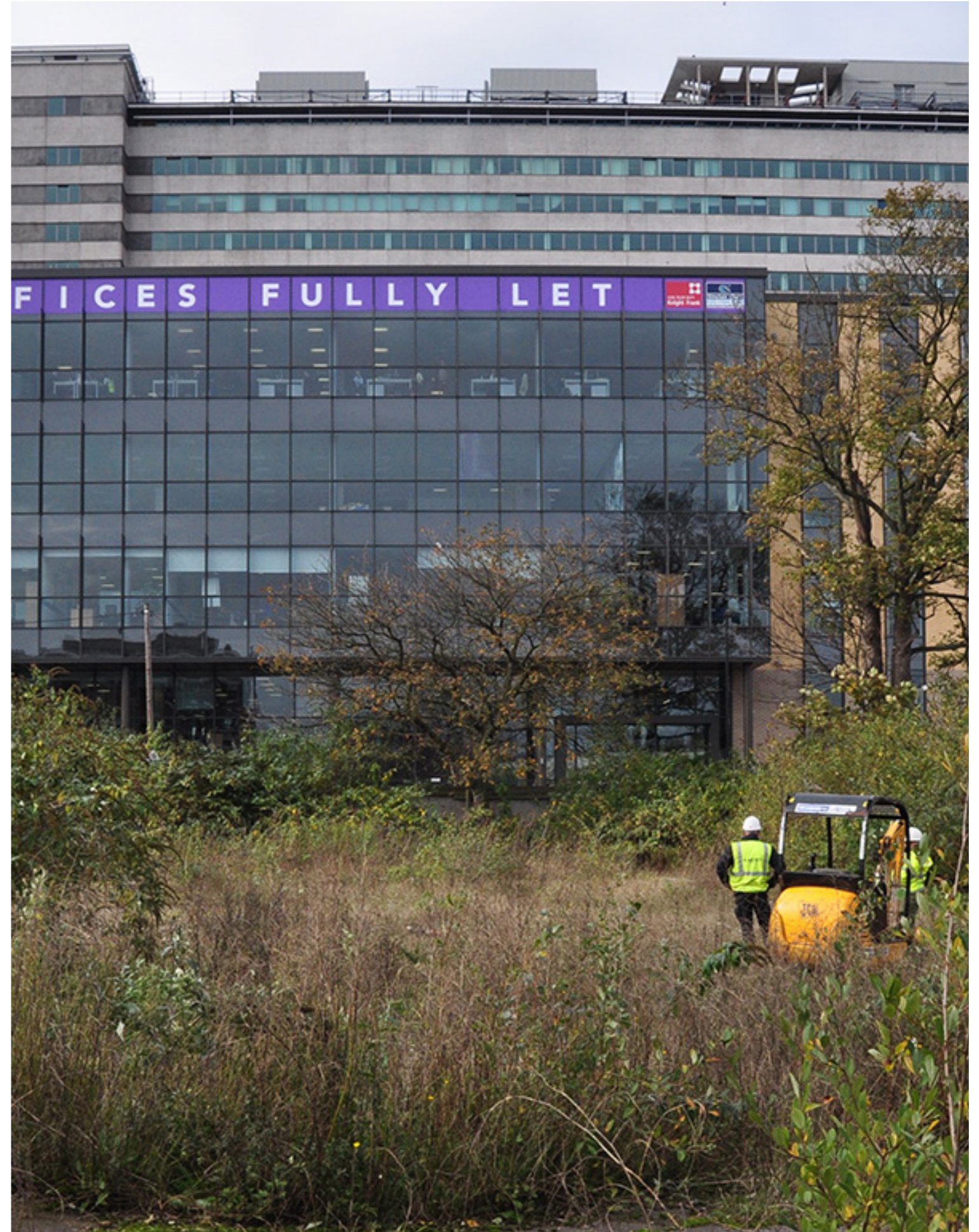
SEPTEMBER 2016 | SOFT LANDSCAPE INSTALLATION



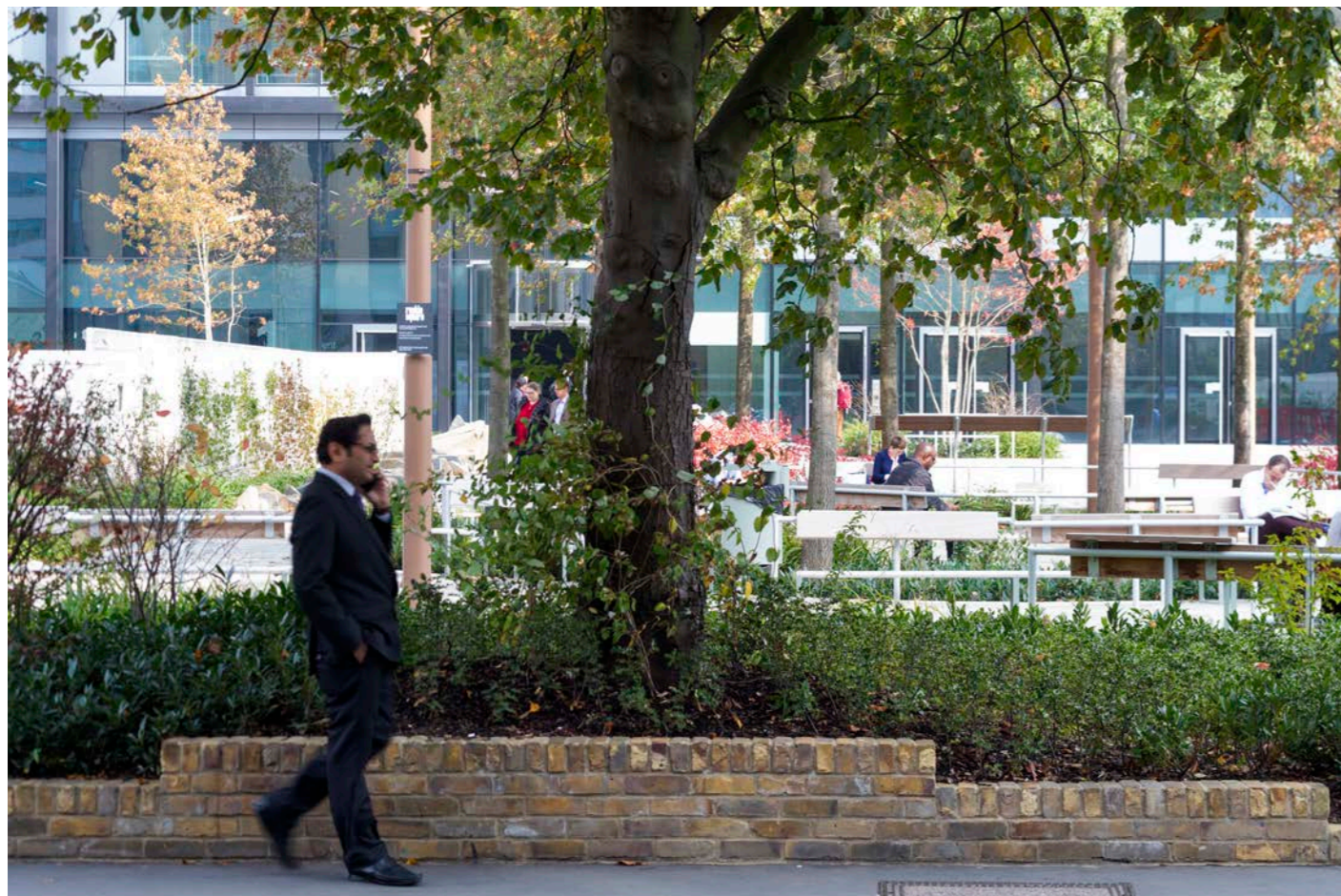
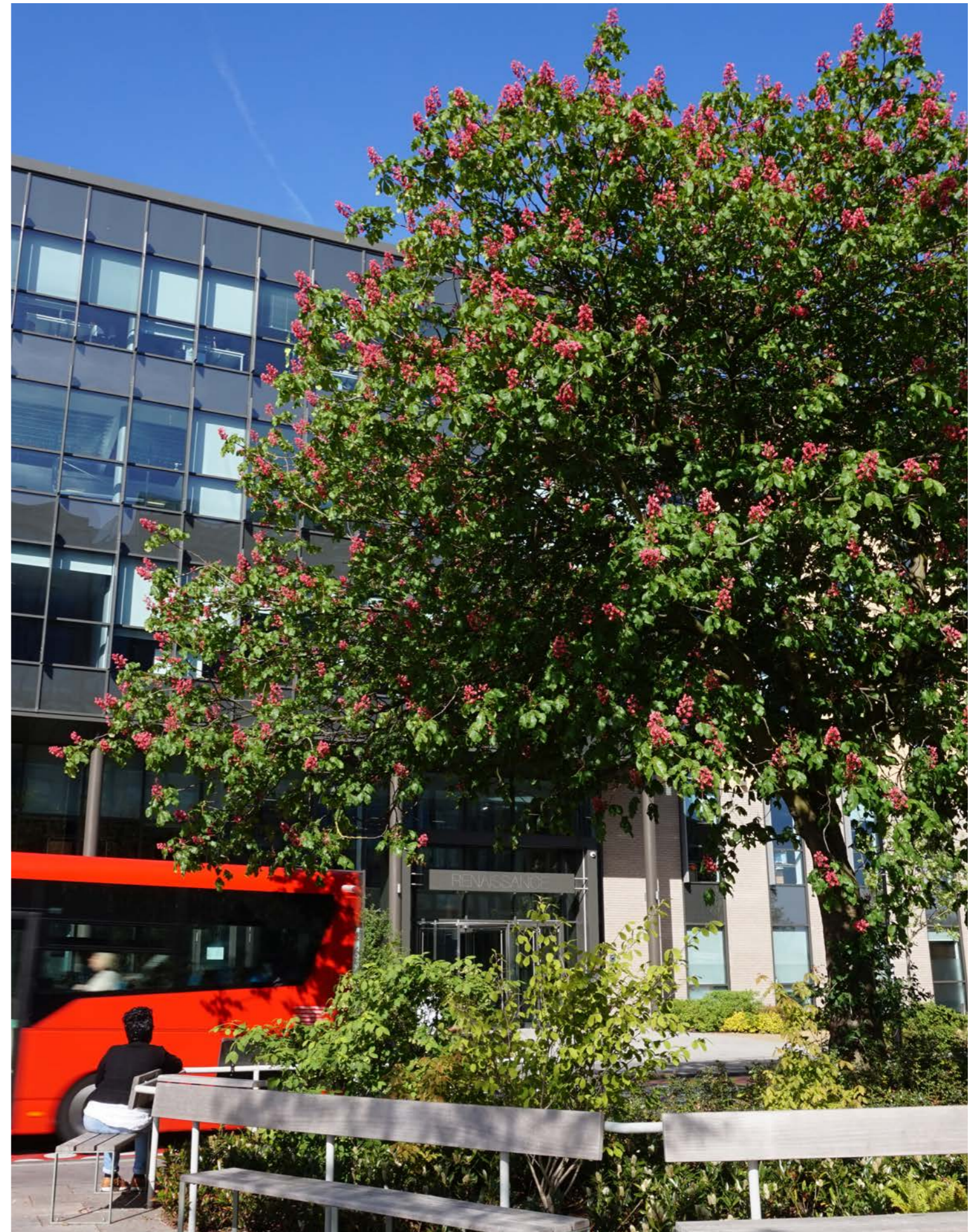
JULY 2017



SEPTEMBER 2017



T1 HORSE CHESTNUT PRE-DEVELOPMENT



T1 HORSE CHESTNUT | MAY 2017 ONWARDS

TEMPORARY PLOTS | HYDROSEEDING



MARCH 2018



APRIL 2018



BUILDING FOOTPRINT - 13 000m²

GREEN ROOF AREA - 3800m²

HARD LANDSCAPE AREA - 5400m²

ATTENUATION TANK VOLUME - 380m³

ROOF ATTENUATION VOLUME - 153m³
(1:100 YEAR EVENT)

PERMEABLE PAVING ATTENUATION VOLUME - 60m³