



SuDS Delivery in Wales

6th September 2018



dwrcymru.com

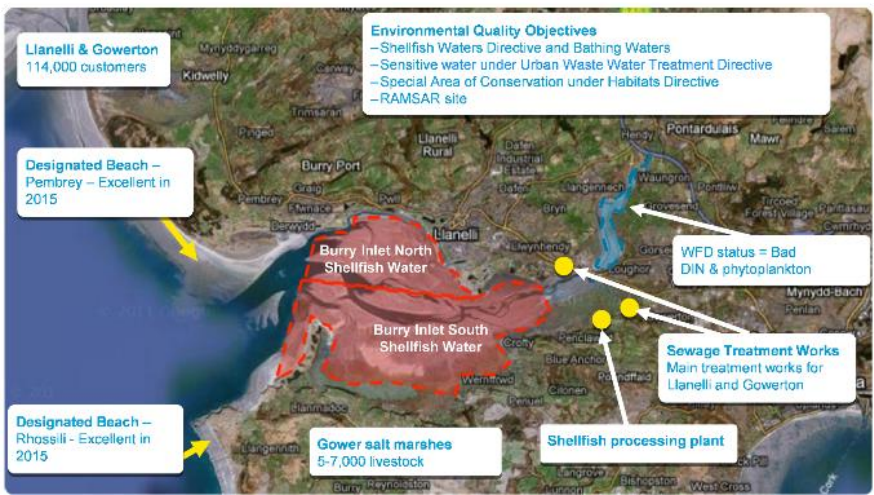


Key Facts

Welsh Water Capital Delivery Alliance

- We have **five** Alliance partners
- Which equates to around **1000** people
- We currently have circa **1400** live capital schemes being designed and delivered by our in-house Engineering Delivery Team and Alliance Partners
- We submit around **150** planning applications a year
- This equates to circa **£1.3m of investment per day** during this AMP

dwrcymru.com



Loughor Estuary – Pre-1997 discharges



dwrcymru.com

Loughor Estuary – Post-1997 discharges



dwrcymru.com



Developing solutions

Storage won't work in this catchment!



dwrcymru.com

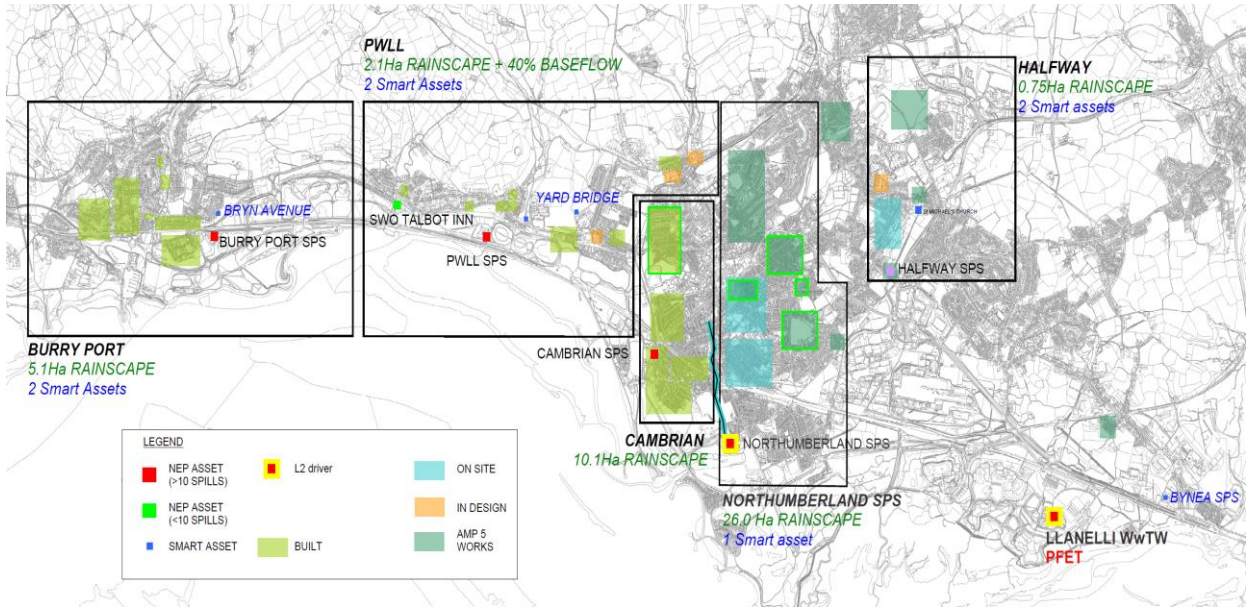


RainScape

GlawLif



dwrcymru.com



dwrcymru.com Llanelli Overview



Investment

- Investment in Llanelli and Gowerton :-
 - AMP5 £15m
 - AMP6 NEP £26m – 7nr. Intermittent Discharges
 - NRW L2 Driver £73m – Northumberland SPS and Both Llanelli and Gowerton WwTW
 - Maintenance improvements of £5m – Halfway SPS
- Total Permeable Area removed by end of AMP6 >44 Ha
- Total flow removed during a 1:5 year storm – 6,116 l/sec
- “Smart Networks” has ‘mobilised’ >25,000 cu.m of previously unused storage across the network
- Peak Flow Equivalent Treatment – PFET – used at Llanelli WwTW

dwrcymru.com



Stebonheath Primary School (AMP5)



dwrcymru.com



Queen Mary's Walk (AMP5)





Glevering Street (AMP5)

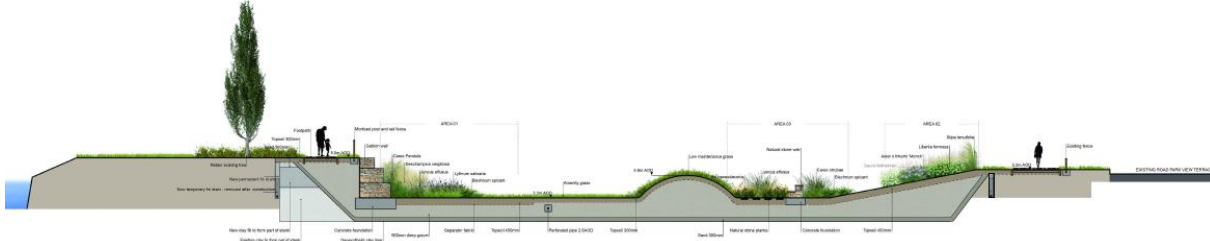
- £2m scheme, part funded via the European Regional Development Fund
- Mix of green infrastructure and below ground interventions
- Close engagement needed with residents
- Lessons learnt



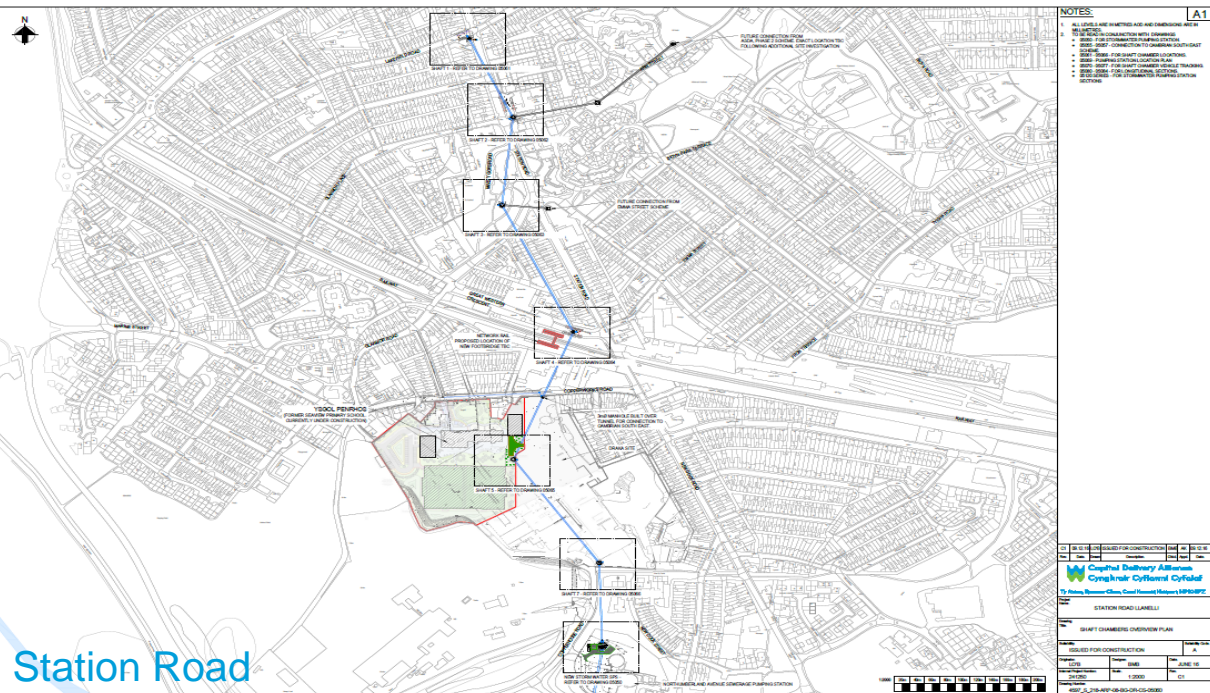
dwrcymru.com



Cambrian North basin – Before (AMP6)



Cambrian North basin - After (AMP6)



Capital Delivery Alliance
Cynghrair Cyflawni Cyfalaf



Station Road

dwrcymru.com

17

Capital Delivery Alliance
Cynghrair Cyflawni Cyfalaf



Station Road

dwrcymru.com

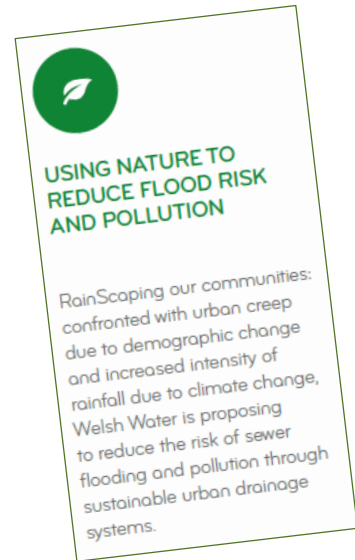
18



Welsh Water 2050

- Strategic vision with the goal of resilience by 2050
- Strategic response 15 – using nature to reduce flood risk and pollution
- Recognises RainScape as a tool to be used in managing a range of issues and deliver multiple benefits
- Resilient solutions will provide the best value solution, whilst managing catchment risk
- Close working with local authorities and others needed. It cannot be delivered in isolation.

dwrcymru.com



19