



C768: Guidance on Construction of SuDS

Case Study 37.3 Hammersmith and Fulham social housing SuDS retrofit

Mark Bentley CMLI
Landscape Architect
Groundwork London

01/11/17



GROUNDWORK LONDON

Improve people’s prospects

by increasing the confidence, skills, well-being and employability of those furthest removed from the labour market, in particular young people.

Create better places

by helping people work together to make their surroundings greener, safer and healthier and get involved in the way decisions are made about services in their area.

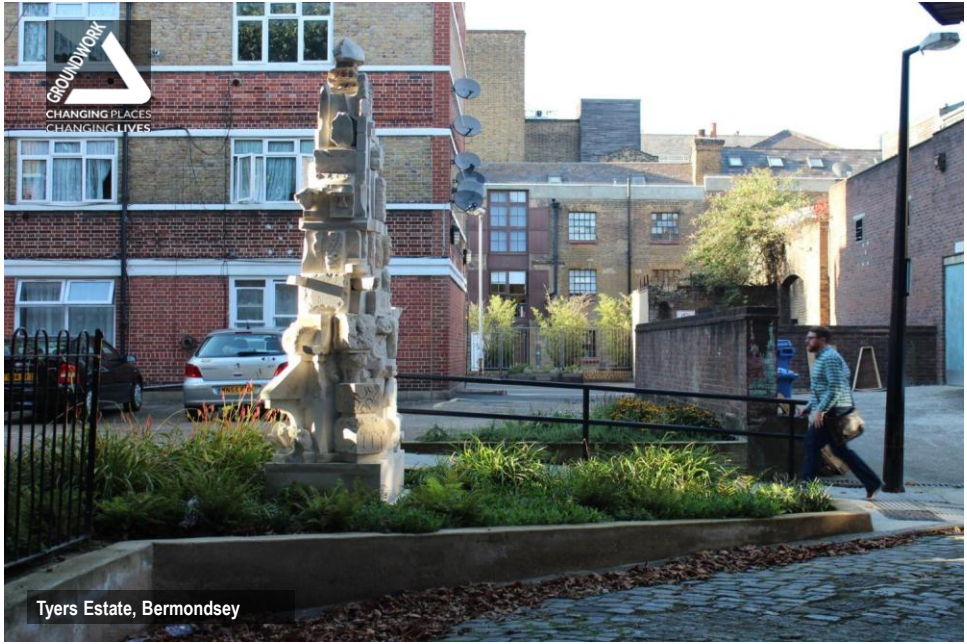
Promote greener living and working

by helping people learn more about their environmental impact and act responsibly to reduce natural resource use.





Tyers Estate, Bermondsey



Tyers Estate, Bermondsey







LIFE+

Climate proofing social housing landscapes

Main objective

Deliver a package of retrofit climate change adaption solutions across three social housing estates in the London Borough of Hammersmith & Fulham (LBHF). By targeting social housing sites the project will also help to reduce deprived communities' vulnerability to climate change.

Partnership

Led by Groundwork London in partnership with London Borough of Hammersmith and Fulham

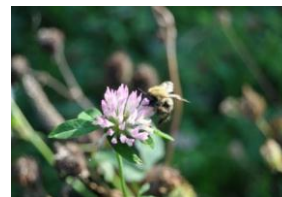


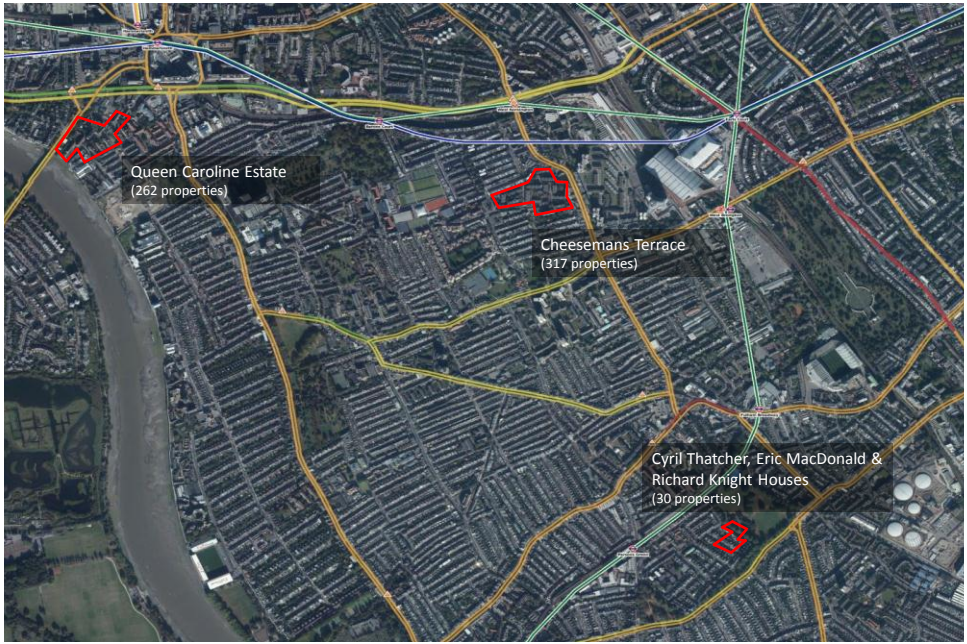
LIFE+

Climate proofing social housing landscapes

Objectives:

- Design and implement **affordable and socially acceptable** retrofit climate change adaptation measures in social housing landscapes.
- Support the achievement of **wider Green Infrastructure (GI) goals**, e.g. biodiversity, air quality, play provision improvements etc.
- Implement main measures through **employment programmes** for long-term unemployed
- Develop a set of **training courses** for housing and grounds maintenance professionals
- Develop a methodology for **resident engagement**
- Evaluate **technical performance** and **social return on investment**.



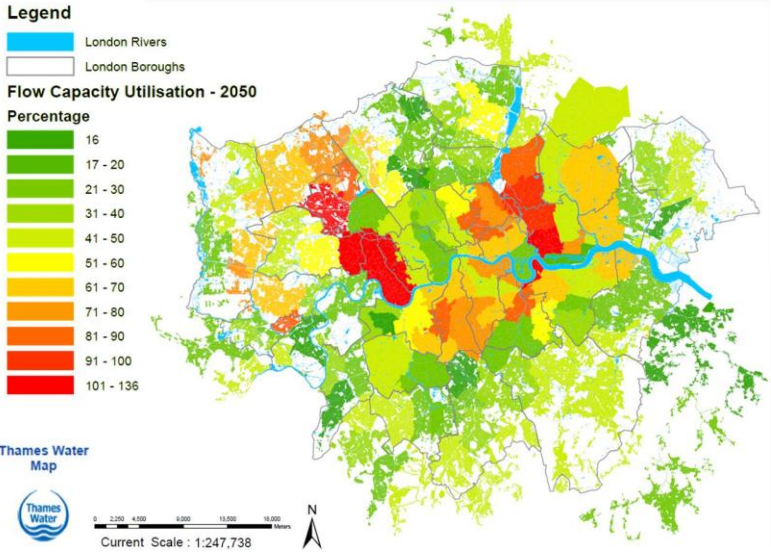


LIFE+

Climate proofing social housing landscapes

Improvements:

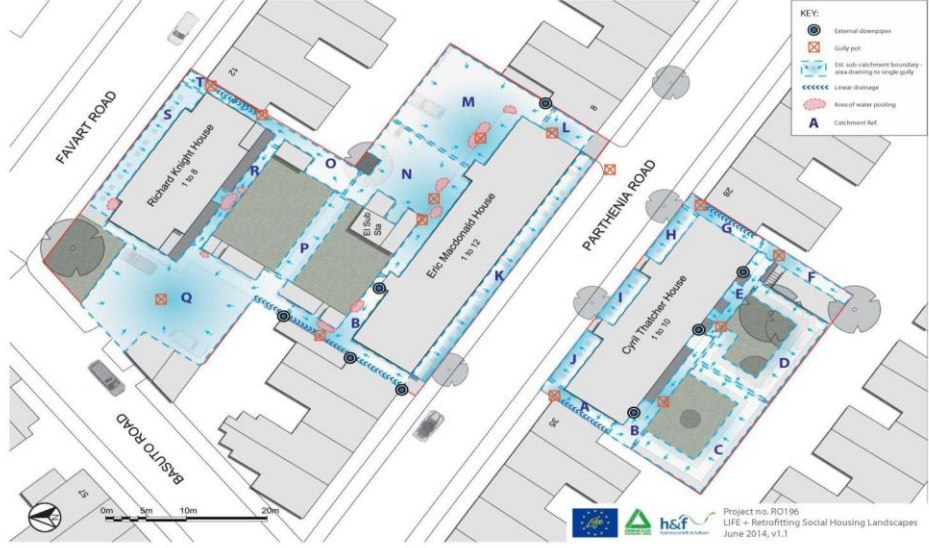
- 4,500 m² of new landscaped areas
- 2,600 m² of new and improved green infrastructure
- 450 m² of green roofs
- Surface water from 3,200m² of impermeable surfacing diverted away from the combined sewer into green infrastructure
- 22 Green Team trainees achieving City & Guilds Level 1 in Practical Horticulture Skills and supported into employment
- Food growing/ gardening groups established on all three estates



LIFE+ | RICHARD KNIGHT HOUSE



CER Plan S3: DRAINAGE SURVEY



CER Plan S6: DRAINAGE OPPORTUNITIES



CER Plan S7: CONSULTATION COMMENTS



GREEN ROOFS

Table for Opportunity 1.1 Green roof on Cyril Thatcher House. Includes details on Type of building, Roof type/structure, Dimensions, Pitch, Existing roof drainage, Services, Access & safety, Photos, and Works required/Notes.

Table for Opportunity 1.2 Green roof on Eric MacDonald House. Includes details on Type of building, Roof type/structure, Dimensions, Pitch, Existing roof drainage, Services, Access & safety, Photos, and Works required/Notes.

GROUND-LEVEL SUDS (vegetated)

Table for Opportunity 3.1 Ground level SuDS in amenity grass space. Includes details on Existing surface, Dimensions, Source of water, Falls into space, Falls across the space, Obstructions, Existing use, Photo, and Works required/Notes.

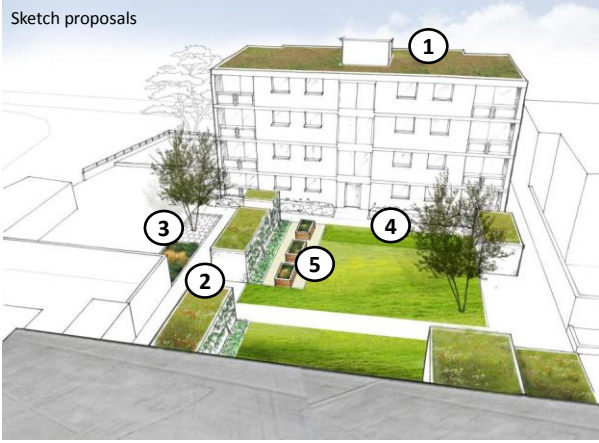
Table for Opportunity 3.2 Pocket rain garden on the edge of the car park. Includes details on Existing surface, Dimensions, Source of water, Falls into space, Falls across the space, Obstructions, Existing use, Photo, and Works required/Notes.

Main summary table for Cyril Thatcher, Eric MacDonald & Richard Knight Houses. Columns include: Adaptation measure, Summary assessment, Technical feasibility, Financial feasibility, Maintenance measures, Effectiveness - climate change adaptation (90%), Circularity (25%), Acceptability (25%), and Relationship to other measures. Contains rows for various green roof and ground-level SuDS opportunities.

Page 1



LIFE+ RICHARD KNIGHT HOUSE



- 1. Extensive green roof on residential block
- 2. Extensive green roofs to bin stores
- 3. Rain garden and tree pit
- 4. Rain garden
- 5. Food growing beds









KEY:

| | | | |
|--|--|--|--|
| | | | |
| | | | |
| | | | |



